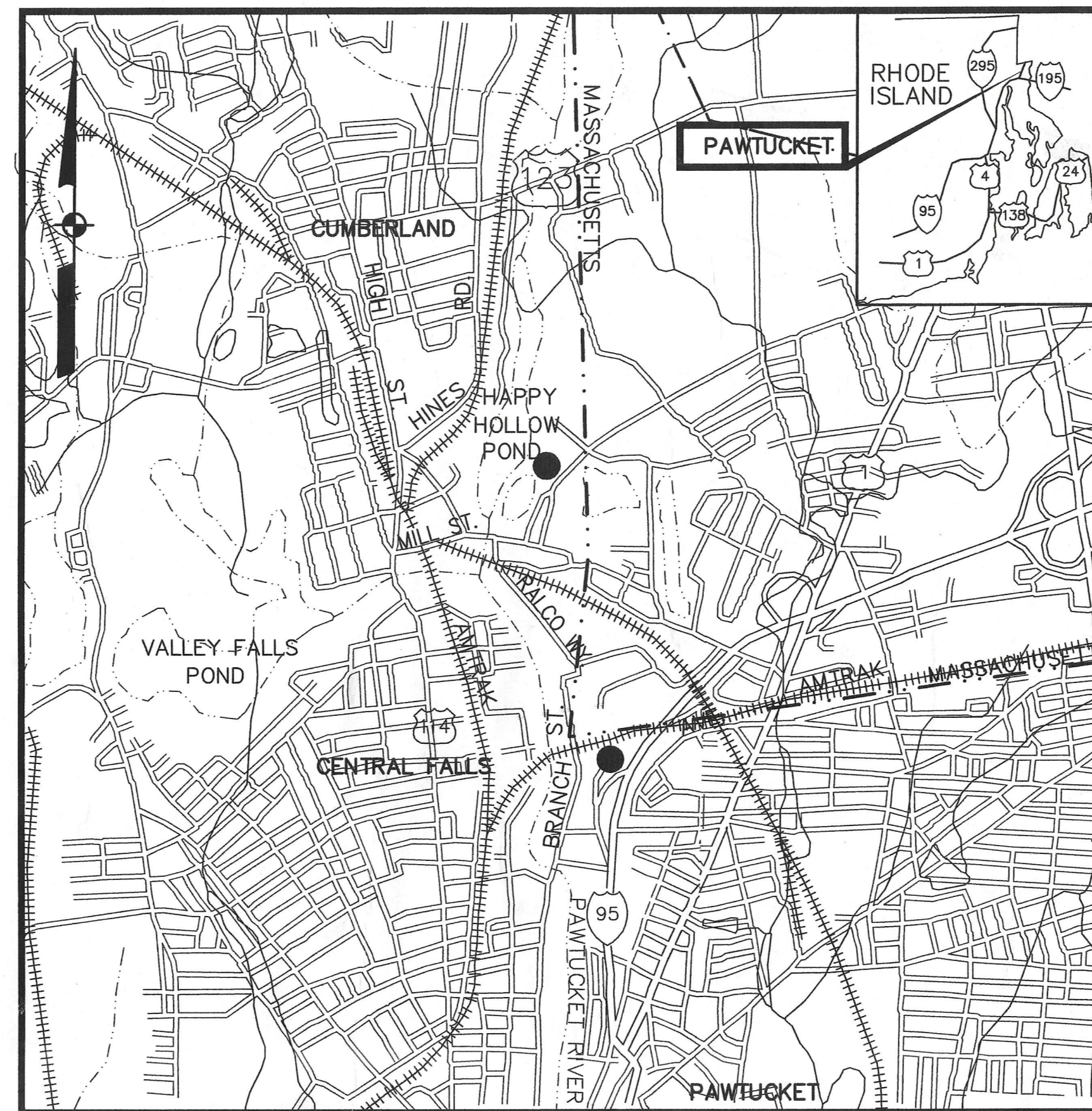


# CONTRACT DRAWINGS - FOR - Pawtucket Regional Water Treatment Facility Pkg 10 - LRSB'S

Pawtucket, Rhode Island

INDEX

OCTOBER 31, 2006



DWG.	REV.	TITLE
		COVER
		<u>SITE</u>
LA-1	1	MILL STREET LRBS - SITE PLAN
LA-2	1	MILL STREET LRBS - SITE PLAN
LA-3	1	MILL STREET LRBS - DETAILS
ST-1	4	MILL STREET LRBS - OUTSIDE PIPING PLAN
ST-2	3	MILL STREET LRBS - OUTSIDE PIPING PLAN
ST-3	6	MILL STREET LRBS - DETAILS AND SECTIONS
ST-4	1	MILL STREET LRBS - SITE PIPING DETAILS

LOCUS  
NOT TO SCALE

**GENERAL NOTES**

LOCATIONS OF ALL UTILITIES AND SUB-SURFACE STRUCTURES ARE FROM SURVEY AND RECORDS OF TOWN, CORPORATIONS, ETC., AND ARE CONSIDERED APPROXIMATE BOTH AS TO SIZE AND LOCATION AND ARE INDICATED ON THESE DRAWINGS TO GIVE BIDDERS A GENERAL IDEA OF EXISTING CONDITIONS TO BE INVESTIGATED BY THE BIDDER. IT IS UNDERSTOOD AND AGREED THAT EACH BIDDER WILL NOT RELY UPON THESE DRAWINGS FOR SUCH INFORMATION, BUT THAT EACH BIDDER SHALL MAKE EXAMINATIONS IN THE FIELD BY VARIOUS AVAILABLE METHODS AND SHALL OBTAIN INFORMATION FROM UTILITY CORPORATIONS AND INDIVIDUALS AS TO THE LOCATION OF ALL SUB-SURFACE STRUCTURES.

ALL ELEVATIONS REFER TO NATIONAL GEODETIC VERTICAL DATUM OF 1929.



A Tyco International Ltd. Company

300 Baker Avenue Suite 290 Concord, Mass.

RFI POSTED SET 10/31/06

PKG #10 10-31-06

ATTLEBORO, MASSACHUSETTS

CUMBERLAND, RHODE ISLAND

BRISTOL COUNTY

PROVIDENCE COUNTY

SILTATION CONTROL BARRIER TO BE LOCATED WITHIN PROPERTY LINE TO ENSURE THAT CONSTRUCTION IS FULLY WITHIN PROPERTY. CONTROL AIRBORNE DUST ADJACENT TO ABUTTING PROPERTIES

PROPOSED STORM DRAINAGE STORAGE AREA  
PROPOSED CHAIN LINK FENCE  
PROPOSED GUARD RAIL

PROPOSED SILTATION CONTROL BARRIER

PROPOSED CHAIN LINK FENCE  
PROPOSED GUARD RAIL

PROPOSED GRAVEL DRIVEWAY (TYP.) CROWNED AT CENTERLINE WITH MIN 2% PITCH TO EACH SIDE.

PROPOSED SILTATION CONTROL BARRIER  
PROPOSED CHAIN LINK FENCE

PROPOSED GRAVEL ROAD

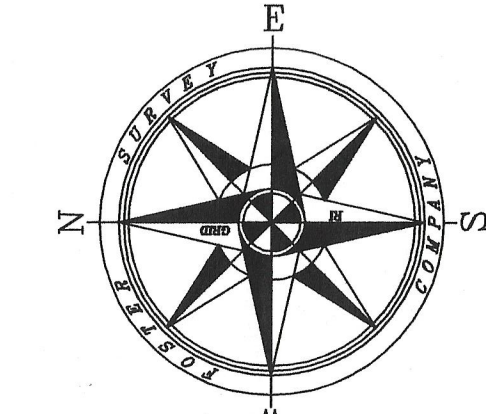
REMOVE AND DISPOSE OF EXISTING CHAIN LINK FENCE AND POSTS, COMPLETE WITH CONCRETE FOOTINGS.

LEVEL SPREADER EL=97.5  
PROPOSED CHAIN LINK FENCE GATE (26' WIDE) WITH 2-TIE POSTS  
PROPOSED SILTATION CONTROL BARRIER

PROPOSED GUARD RAIL  
PROPOSED CHAIN LINK FENCE  
LEVEL SPREADER (EL=98.5)  
LEVEL SPREADER (EL=98.5)

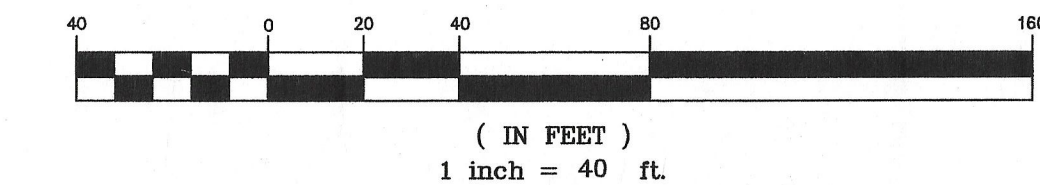
PROPOSED SILTATION CONTROL BARRIER

50' PERIMETER WETLAND



ALL GRADING FOR LRSB'S AND ASSOCIATED WORK WAS LOWERED BY TWO FEET (2.0') AS A RESPONSE TO RFI-159

GRAPHIC SCALE



( IN FEET )  
1 inch = 40 ft.

SEE DWG. LA-2

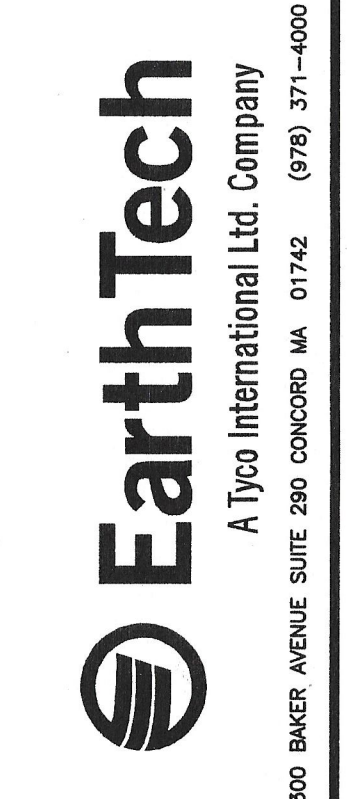
MATCH LINE

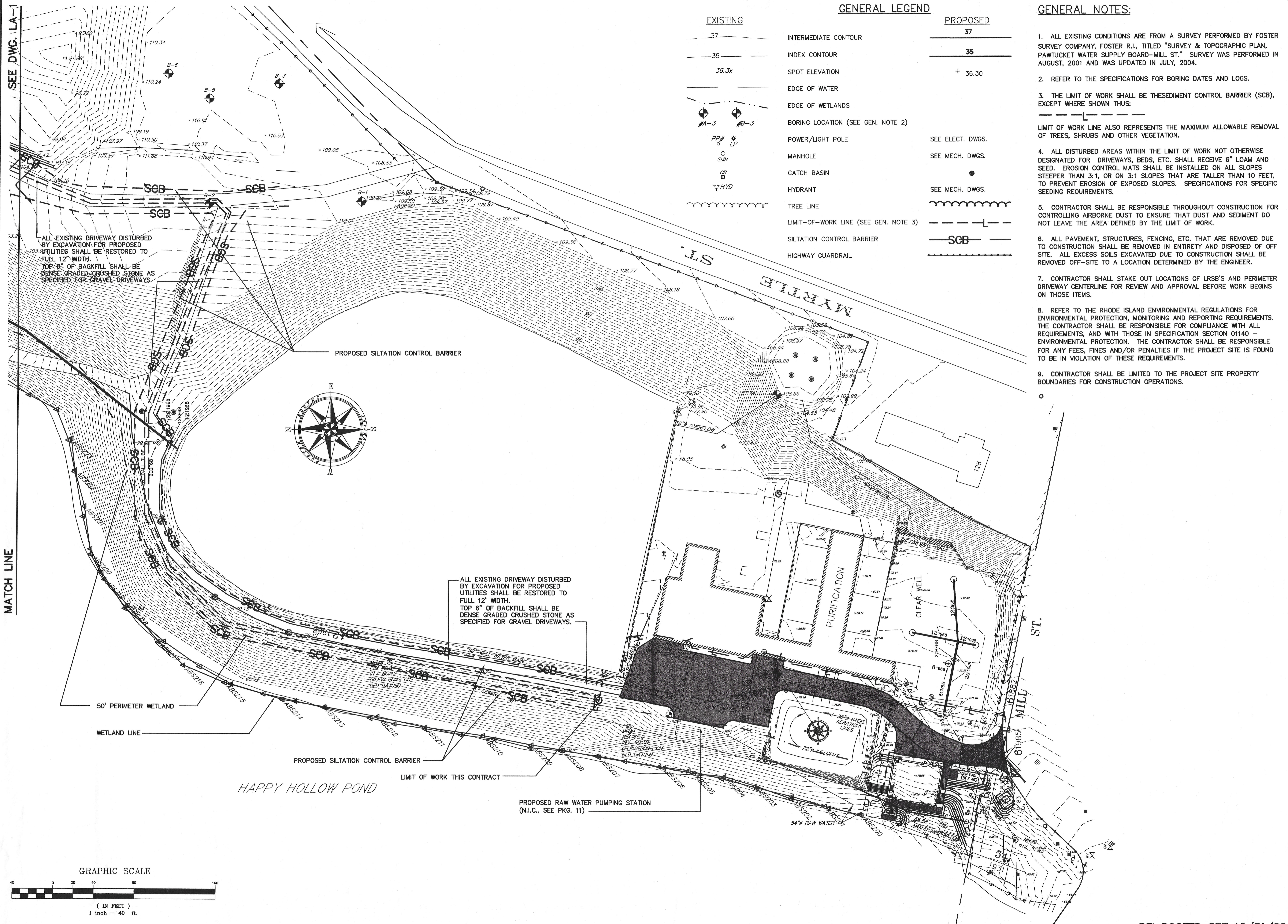
NO.	BY	DATE
1	ISSUED FOR RFI POSTED SET	GBW 10/31/2005
0	ISSUED FOR CONSTRUCTION	GBW 04/07/2005

PAWTUCKET, RHODE ISLAND  
PAWTUCKET REGIONAL  
WATER TREATMENT FACILITY  
PKG 10 - LRSB'S  
MILL STREET LRSBS - SITE PLAN

DESIGNED BY	DWG SCALE
DRAWN BY	AS NOTED
CHECKED BY	CONTRACT NO.
	DATE
	OCTOBER 31, 2005

LA-1  
SHEET 2 OF





**GENERAL LEGEND**

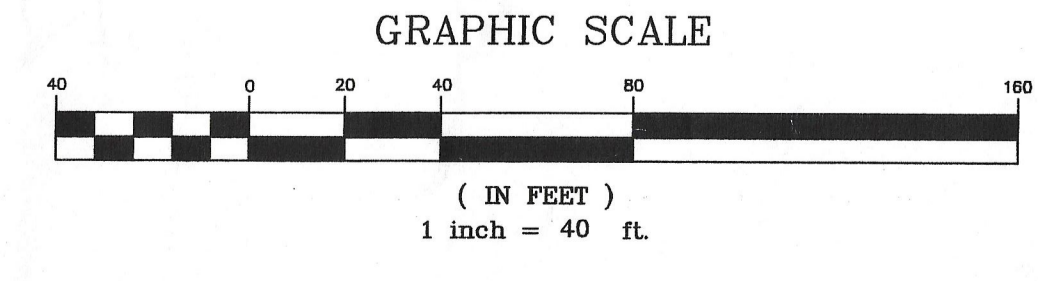
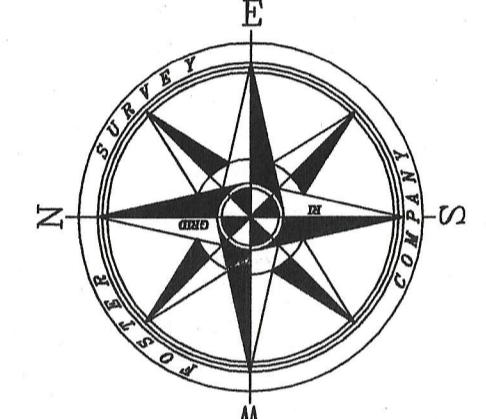
EXISTING		PROPOSED
37	INTERMEDIATE CONTOUR	37
35	INDEX CONTOUR	35
36.3x	SPOT ELEVATION	+ 36.30
(Dashed line)	EDGE OF WATER	
(Dashed line)	EDGE OF WETLANDS	
(Circle with cross)	BORING LOCATION (SEE GEN. NOTE 2)	
(Circle with dot)	POWER/LIGHT POLE	SEE ELECT. DWGS.
(Circle with X)	MANHOLE	SEE MECH. DWGS.
(Square with X)	CATCH BASIN	
(Circle with dot)	HYDRANT	SEE MECH. DWGS.
(Wavy line)	TREE LINE	
(Dashed line with T)	LIMIT-OF-WORK LINE (SEE GEN. NOTE 3)	
(Dashed line with T)	SILTATION CONTROL BARRIER	SCB
(Dashed line with T)	HIGHWAY GUARDRAIL	

**GENERAL NOTES:**

- ALL EXISTING CONDITIONS ARE FROM A SURVEY PERFORMED BY FOSTER SURVEY COMPANY, FOSTER R.I., TITLED "SURVEY & TOPOGRAPHIC PLAN, PAWTUCKET WATER SUPPLY BOARD-MILL ST." SURVEY WAS PERFORMED IN AUGUST, 2001 AND WAS UPDATED IN JULY, 2004.
- REFER TO THE SPECIFICATIONS FOR BORING DATES AND LOGS.
- THE LIMIT OF WORK SHALL BE THE SEDIMENT CONTROL BARRIER (SCB), EXCEPT WHERE SHOWN THUS:
- LIMIT OF WORK LINE ALSO REPRESENTS THE MAXIMUM ALLOWABLE REMOVAL OF TREES, SHRUBS AND OTHER VEGETATION.
- ALL DISTURBED AREAS WITHIN THE LIMIT OF WORK NOT OTHERWISE DESIGNATED FOR DRIVEWAYS, BEDS, ETC. SHALL RECEIVE 6" LOAM AND SEED. EROSION CONTROL MATS SHALL BE INSTALLED ON ALL SLOPES STEEPER THAN 3:1, OR ON 3:1 SLOPES THAT ARE TALLER THAN 10 FEET, TO PREVENT EROSION OF EXPOSED SLOPES. SPECIFICATIONS FOR SPECIFIC SEEDING REQUIREMENTS.
- CONTRACTOR SHALL BE RESPONSIBLE THROUGHOUT CONSTRUCTION FOR CONTROLLING AIRBORNE DUST TO ENSURE THAT DUST AND SEDIMENT DO NOT LEAVE THE AREA DEFINED BY THE LIMIT OF WORK.
- ALL PAVEMENT, STRUCTURES, FENCING, ETC. THAT ARE REMOVED DUE TO CONSTRUCTION SHALL BE REMOVED IN ENTIRETY AND DISPOSED OF OFF SITE. ALL EXCESS SOILS EXCAVATED DUE TO CONSTRUCTION SHALL BE REMOVED OFF-SITE TO A LOCATION DETERMINED BY THE ENGINEER.
- CONTRACTOR SHALL STAKE OUT LOCATIONS OF LRSB'S AND PERIMETER DRIVEWAY CENTERLINE FOR REVIEW AND APPROVAL BEFORE WORK BEGINS ON THOSE ITEMS.
- REFER TO THE RHODE ISLAND ENVIRONMENTAL REGULATIONS FOR ENVIRONMENTAL PROTECTION, MONITORING AND REPORTING REQUIREMENTS. THE CONTRACTOR SHALL BE RESPONSIBLE FOR COMPLIANCE WITH ALL REQUIREMENTS, AND WITH THOSE IN SPECIFICATION SECTION 01140 - ENVIRONMENTAL PROTECTION. THE CONTRACTOR SHALL BE RESPONSIBLE FOR ANY FEES, FINES AND/OR PENALTIES IF THE PROJECT SITE IS FOUND TO BE IN VIOLATION OF THESE REQUIREMENTS.
- CONTRACTOR SHALL BE LIMITED TO THE PROJECT SITE PROPERTY BOUNDARIES FOR CONSTRUCTION OPERATIONS.

ALL EXISTING DRIVEWAY DISTURBED BY EXCAVATION FOR PROPOSED UTILITIES SHALL BE RESTORED TO FULL 12' WIDTH. TOP 6" OF BACKFILL SHALL BE DENSE GRADED CRUSHED STONE AS SPECIFIED FOR GRAVEL DRIVEWAYS.

ALL EXISTING DRIVEWAY DISTURBED BY EXCAVATION FOR PROPOSED UTILITIES SHALL BE RESTORED TO FULL 12' WIDTH. TOP 6" OF BACKFILL SHALL BE DENSE GRADED CRUSHED STONE AS SPECIFIED FOR GRAVEL DRIVEWAYS.

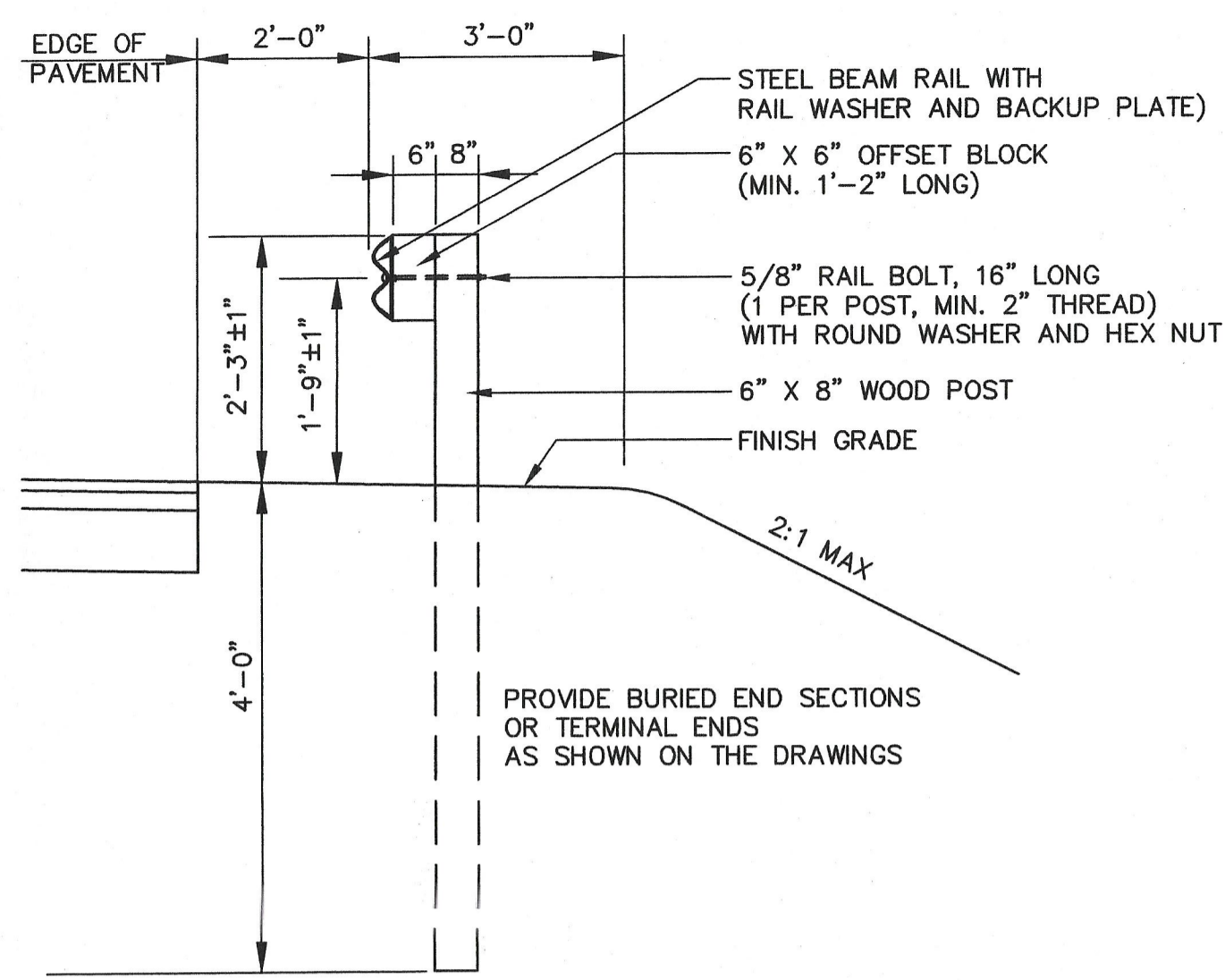


**EarthTech**  
A Tyco International Ltd. Company  
300 BAKER AVENUE SUITE 250 CONCORD MA 01742 (978) 371-1000

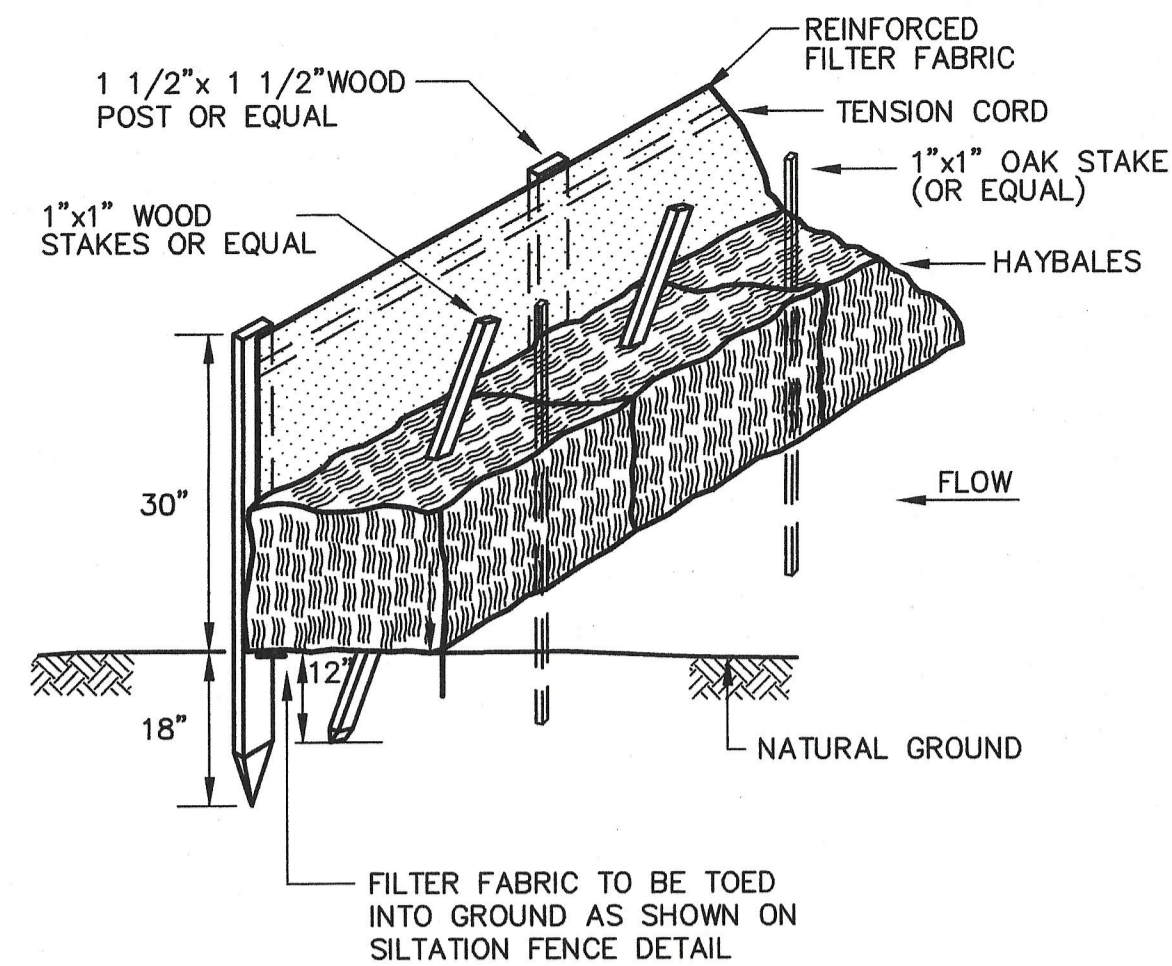
<p>PAWTUCKET, RHODE ISLAND <b>PAWTUCKET REGIONAL WATER TREATMENT FACILITY</b> <b>PKG 10 - LRSB'S</b> MILL STREET LRSB'S - SITE PLAN</p>	<p>DESIGNED BY: DWG SCALE AS NOTED DRAWN BY: CONTRACT NO. CHECKED BY: DATE OCTOBER 31, 2006</p>
---	---

LA-2

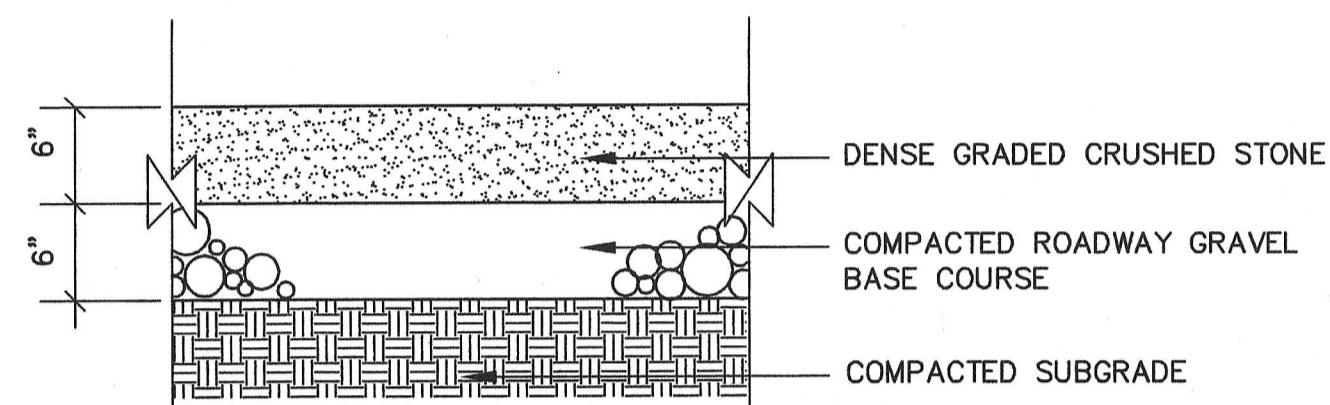
SHEET 3 OF



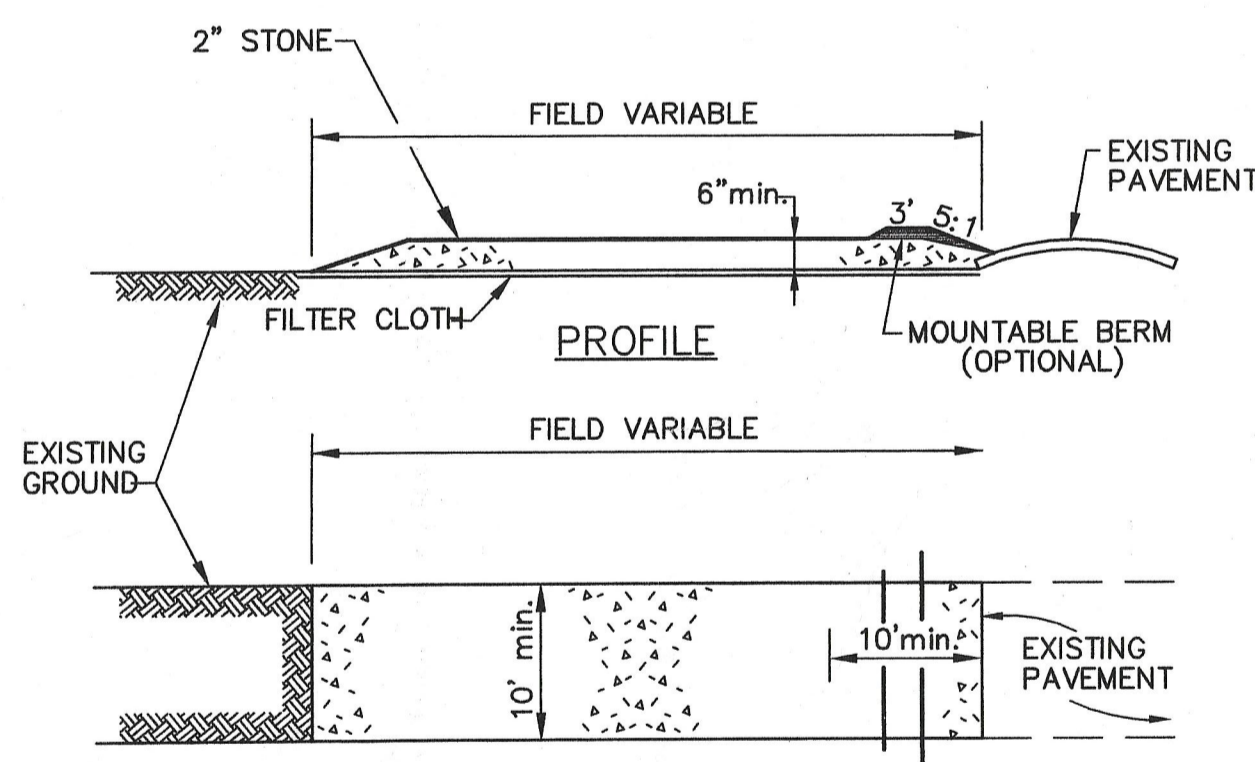
**HIGHWAY GUARD RAIL**  
NOT TO SCALE



**SILTATION CONTROL BARRIER**  
NOT TO SCALE



**GRAVEL DRIVEWAY**  
NOT TO SCALE

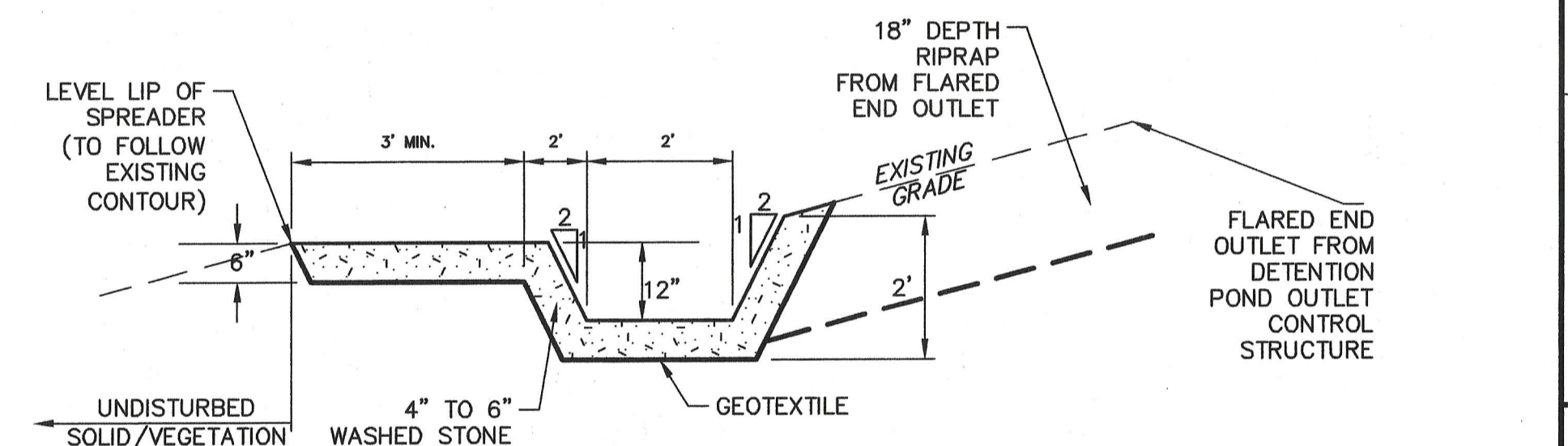


**CONSTRUCTION SPECIFICATIONS:**

**PLAN VIEW**  
NOT TO SCALE

- 1.) STONE SIZE:  
USE 2" DIAMETER STONE OR RECLAIMED/RECYCLED CONCRETE EQUIVALENT.
- 2.) LENGTH:  
RECOMMEND GREATER THAN 50 FEET WHERE PRACTICAL.
- 3.) THICKNESS:  
NOT LESS THAN 6 INCHES.
- 4.) WIDTH:  
10 FEET MINIMUM, BUT NOT LESS THAN THE FULL WIDTH AT POINTS WHERE INGRESS OR EGRESS OCCUR.
- 5.) FILTER CLOTH:  
SHALL BE PLACED OVER THE ENTIRE AREA PRIOR TO THE PLACING OF STONE.
- 6.) SURFACE WATER:  
ALL SURFACE WATER FLOWING OR DIVERTED TOWARD CONSTRUCTION ENTRANCES SHALL BE PIPED ACROSS THE ENTRANCE. IF PIPING IS IMPRACTICAL, A MOUNTABLE BERM WILL BE PERMITTED.
- 7.) MAINTENANCE:  
THE ENTRANCE SHALL BE MAINTAINED IN A CONDITION THAT WILL PREVENT TRACKING OR FLOWING OF SEDIMENT ONTO PUBLIC RIGHT-OF-WAY. THIS MAY REQUIRE PERIODIC TOP DRESSING WITH ADDITIONAL STONE AS CONDITIONS DEMAND AND REPAIR AND/OR CLEANOUT OF ANY MEASURES USED TO TRAP SEDIMENT. ALL SEDIMENT SPILLED, DROPPED, WASHED, OR TRACKED ONTO PUBLIC RIGHT-OF-WAY MUST BE REMOVED IMMEDIATELY.
- 8.) PERIODIC INSPECTION AND NEEDED MAINTENANCE SHALL BE PROVIDED.
- 9.) REMOVE STABILIZED CONSTRUCTION ENTRANCE PRIOR TO PLACEMENT OF BITUMINOUS BASE COURSE

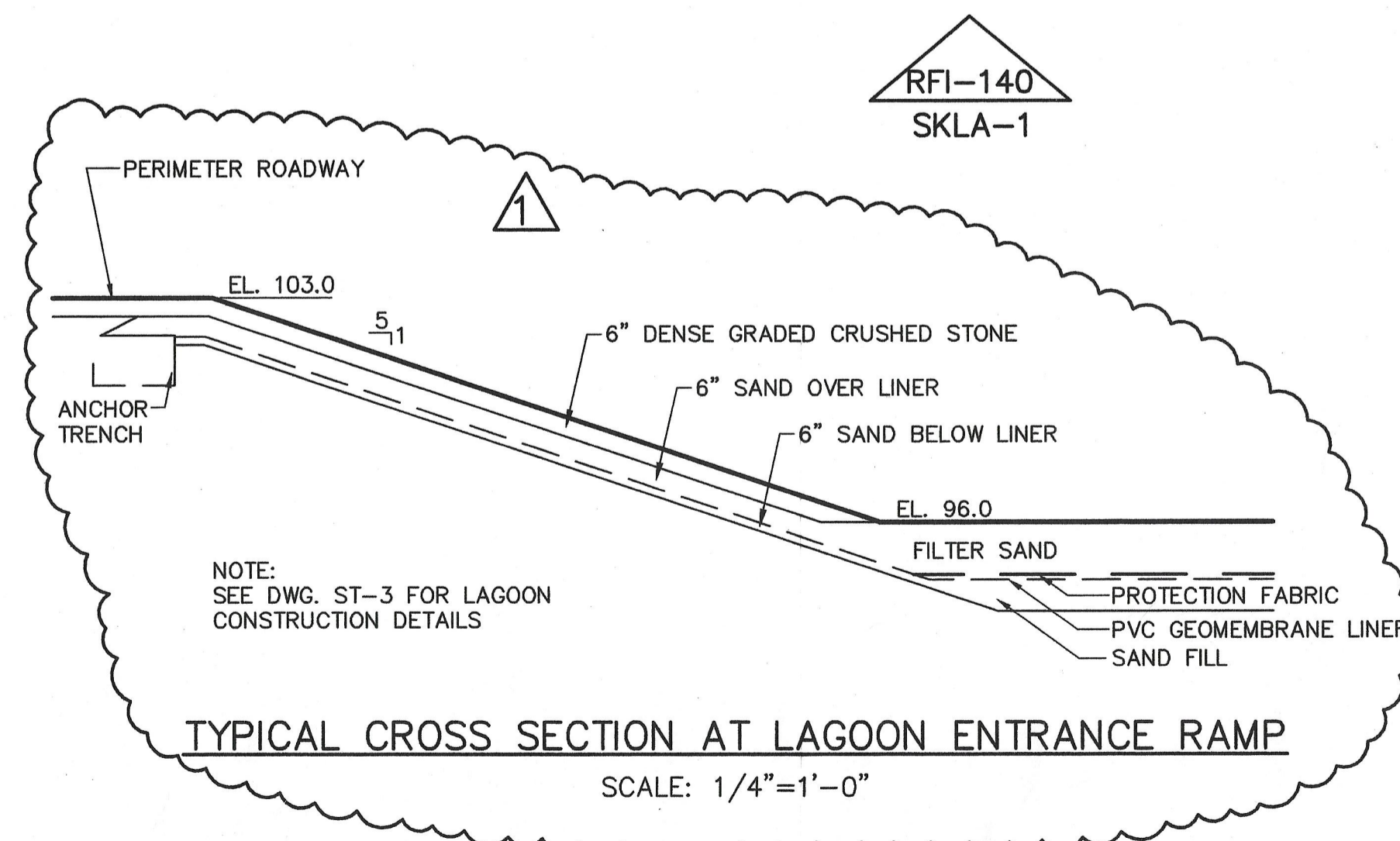
**STABILIZED CONSTRUCTION ENTRANCE**  
NOT TO SCALE



**CHAIN LINK FENCE WITH BARBED WIRE**  
NOT TO SCALE

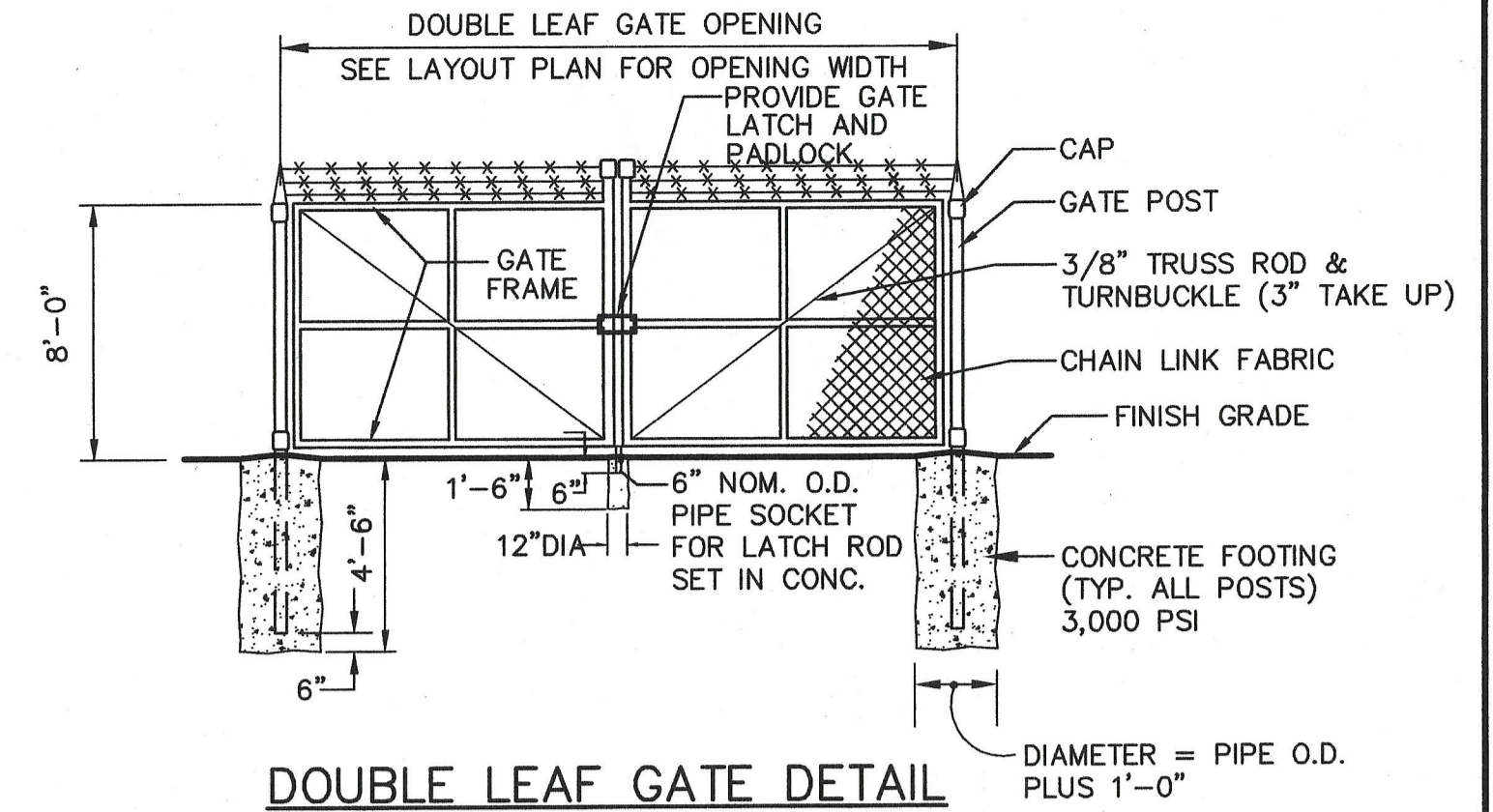
- CONSTRUCTION SPECIFICATIONS:**
1. LEVEL SPREADERS SHALL BE INSTALLED UNDER THE DIRECT SUPERVISION OF THE ENGINEER.
  2. CONSTRUCT LEVEL LIP ON ZERO PERCENT GRADE FOLLOWING AN EXISTING CONTOUR LINE, TO INSURE UNIFORM SPREADING OF SEDIMENT FREE RUNOFF (CONVERTING CHANNEL FLOW TO SHEET FLOW).
  3. LEVEL SPREADER SHALL BE CONSTRUCTED ON UNDISTURBED SOIL (NOT ON FILL).
  4. THE ENTIRE EXCAVATED AREA SHALL BE LINED WITH GEOTEXTILE AND 6" OF 4-6 INCH STONE.
  5. THE ENTRANCE CHANNEL SHALL NOT EXCEED A 1% GRADE FOR AT LEAST 20 FEET BEFORE ENTERING SPREADER.
  6. STORM RUNOFF CONVERTED TO SHEET FLOW SHALL OUTLET ONTO UNDISTURBED AREAS. WATER SHALL NOT BE RECONCENTRATED IMMEDIATELY BELOW THE POINT OF DISCHARGE.
  7. PERIODIC INSPECTION AND NEEDED MAINTENANCE SHALL BE PROVIDED.

**LEVEL SPREADER DETAIL**  
NOT TO SCALE

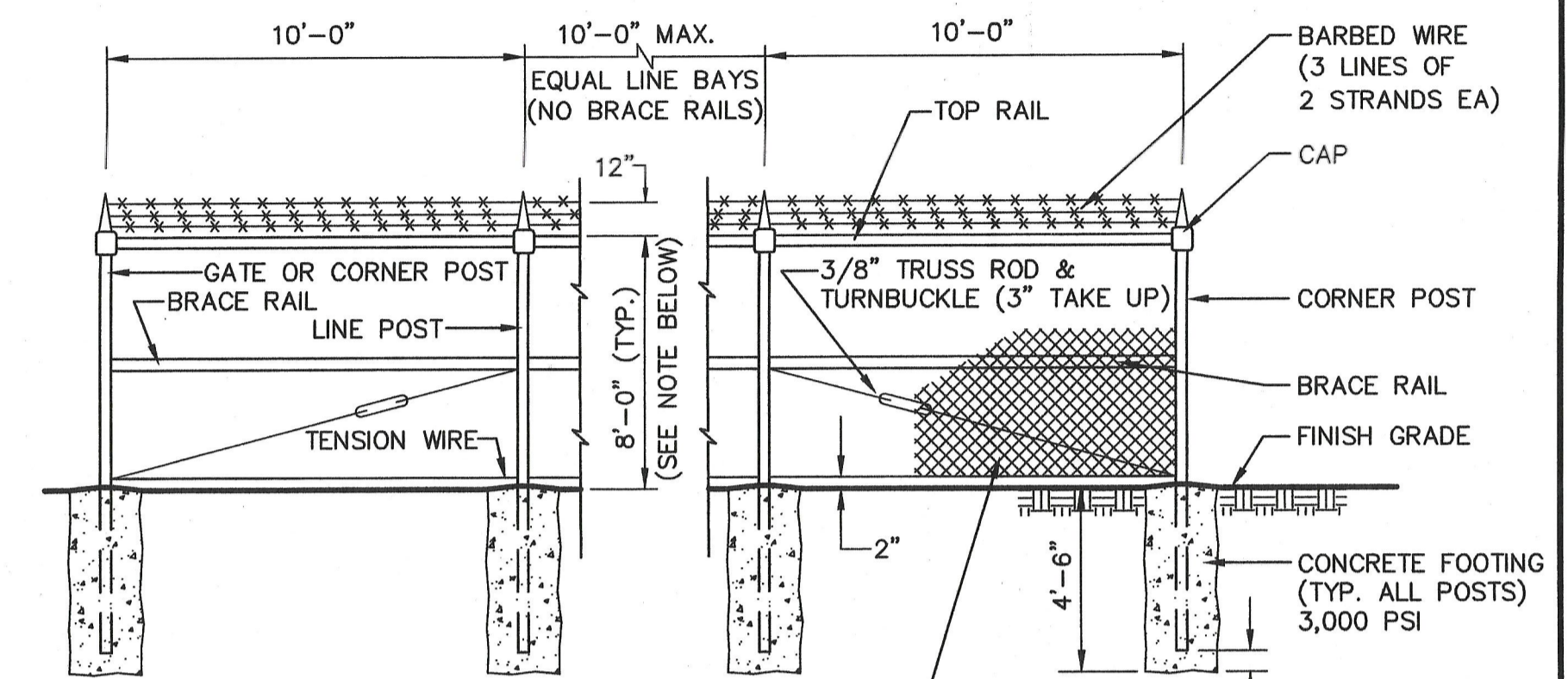


**TYPICAL CROSS SECTION AT LAGOON ENTRANCE RAMP**

SCALE: 1/4"=1'-0"



**DOUBLE LEAF GATE DETAIL**  
NOT TO SCALE



**CHAIN LINK FENCE WITH BARBED WIRE**  
NOT TO SCALE

NO.	REVISIONS	DATE	BY
1	ISSUED FOR RFI POSTED SET	GBW/10/31/2006	
0	ISSUED FOR CONSTRUCTION	GBW/04/07/2005	

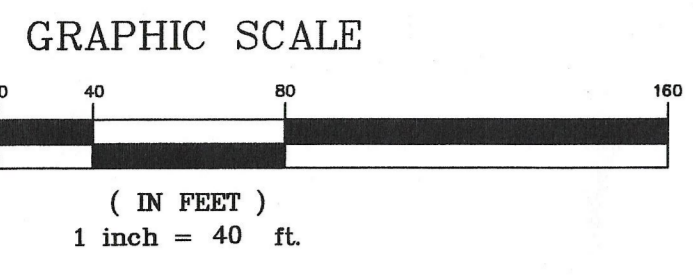
PAWTUCKET, RHODE ISLAND  
**PAWTUCKET REGIONAL WATER TREATMENT FACILITY**  
**PKG 10 - LRSBS**  
MILL STREET LRSBS - DETAILS

DESIGNED BY	DWG SCALE AS NOTED
DRAWN BY	CONTRACT NO.
CHECKED BY	DATE OCTOBER 31, 2006

LA-3

RFI POSTED SET 10/31/06

SHEET 4 OF



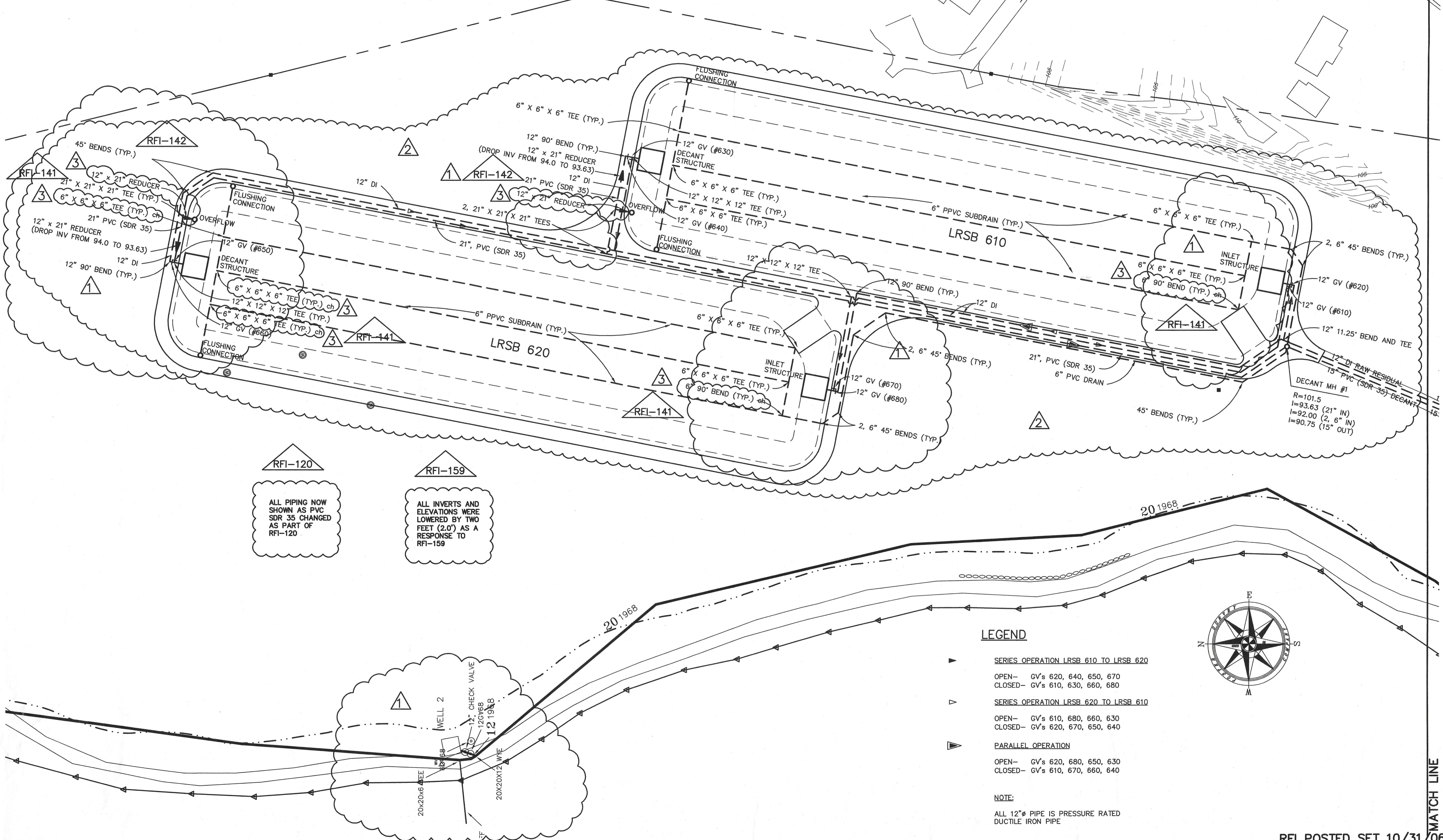
ATTLEBORO, MASSACHUSETTS

CUMBERLAND, RHODE ISLAND

BRISTOL COUNTY

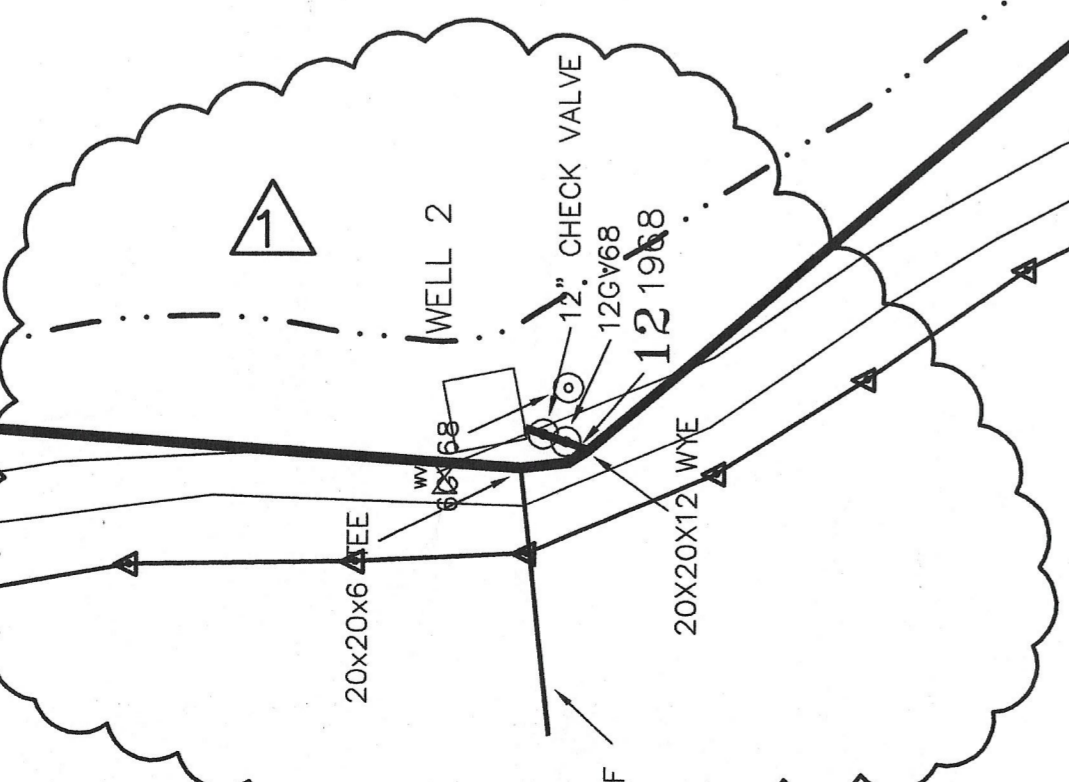
PROVIDENCE COUNTY

ROBINSON ST.  
BROWN



RFI-120  
ALL PIPING NOW SHOWN AS PVC SDR 35 CHANGED AS PART OF RFI-120

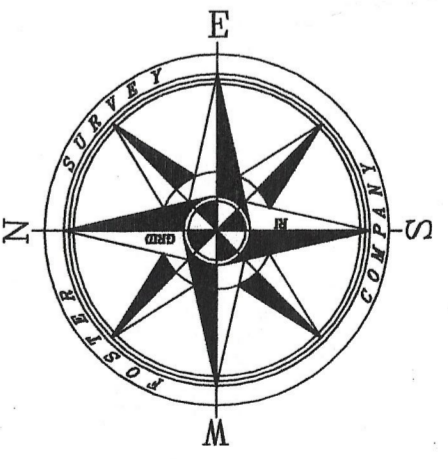
RFI-159  
ALL INVERTS AND ELEVATIONS WERE LOWERED BY TWO FEET (2.0') AS A RESPONSE TO RFI-159



**LEGEND**

- ▶ SERIES OPERATION LRSB 610 TO LRSB 620  
OPEN- GV's 620, 640, 650, 670  
CLOSED- GV's 610, 630, 660, 680
- ▷ SERIES OPERATION LRSB 620 TO LRSB 610  
OPEN- GV's 610, 680, 660, 630  
CLOSED- GV's 620, 670, 650, 640
- ▶ PARALLEL OPERATION  
OPEN- GV's 620, 680, 650, 630  
CLOSED- GV's 610, 670, 660, 640

**NOTE:**  
ALL 12" PIPE IS PRESSURE RATED DUCTILE IRON PIPE



SET DWG. ST-2

MATCH LINE

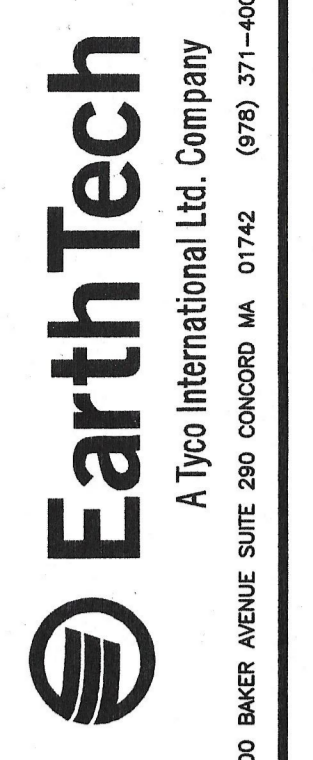
4	ISSUED FOR RFI POSTED SET	GBW/10/31/2006
3	REVISED PIPING	GBW/08/25/2006
2	REVISED PIPING	GBW/07/28/2006
1	HEALTH COMMENTS	GBW/06/27/2006
0	ISSUED FOR CONSTRUCTION	GBW/04/07/2006
NO.	REVISIONS	DATE

FULL SIZE DRAWING = 4"	
------------------------	--

PAWTUCKET, RHODE ISLAND  
**PAWTUCKET REGIONAL WATER TREATMENT FACILITY**  
**PKG 10 - LRSB'S**  
MILL STREET LRSBS - OUTSIDE PIPING PLAN

DESIGNED BY	DWG SCALE
DRAWN BY	AS NOTED
CHECKED BY	CONTRACT NO.
DATE	
OCTOBER 31, 2006	

ST-1  
SHEET 5 OF

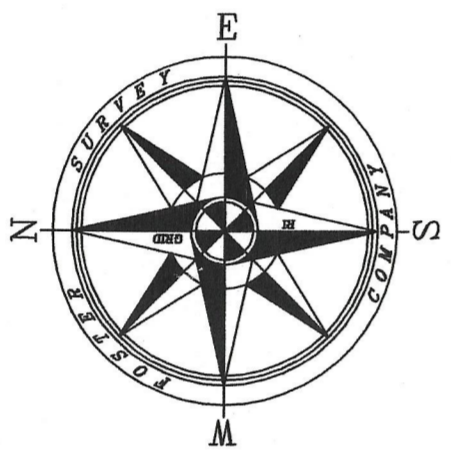
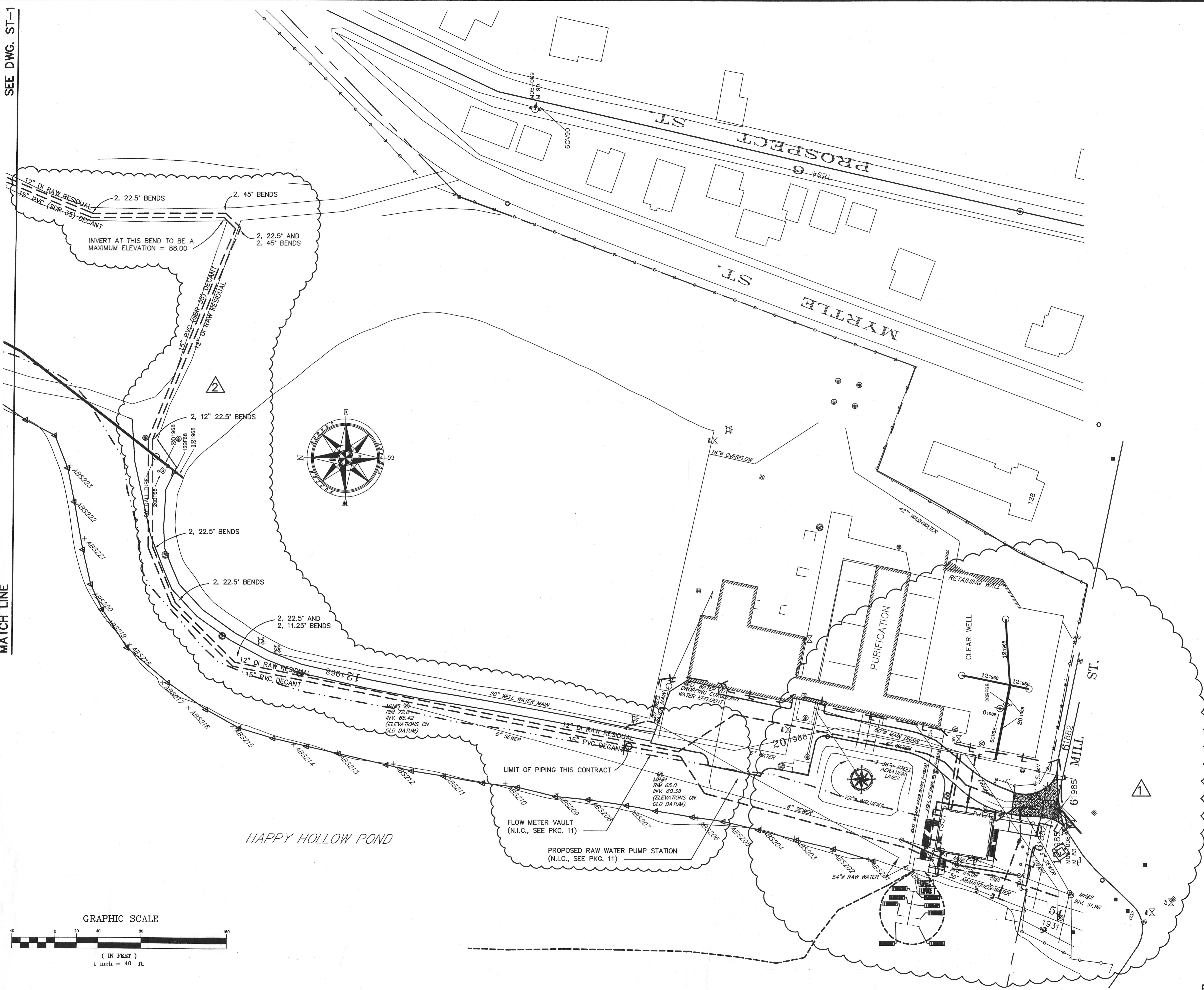


L:\work\99993\CAD\110 LRSB'S\ST-1.dwg - Mill St. LRSB's - Station.dwg, 11/15/2006 8:12:35 PM, gow.wch

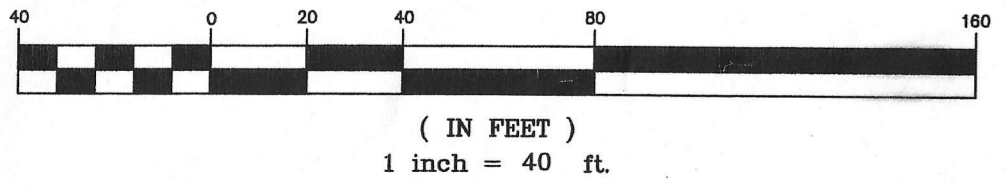
RFI POSTED SET 10/31/06

SEE DWG. ST-1

MATCH LINE



GRAPHIC SCALE



NO.	REVISIONS	DATE	BY
3	ISSUED FOR RFI POSTED SET	GBW 10/31/06	
2	REVISED PIPING	GBW 07/29/06	
1	HEALTH COMMENTS	GBW 08/27/06	
0	ISSUED FOR CONSTRUCTION	GBW 09/07/06	

PAWTUCKET, RHODE ISLAND  
 PAWTUCKET REGIONAL  
 WATER TREATMENT FACILITY  
**PKG 10 - LRSB'S**  
 MILL STREET LRSB'S - OUTSIDE PIPING PLAN

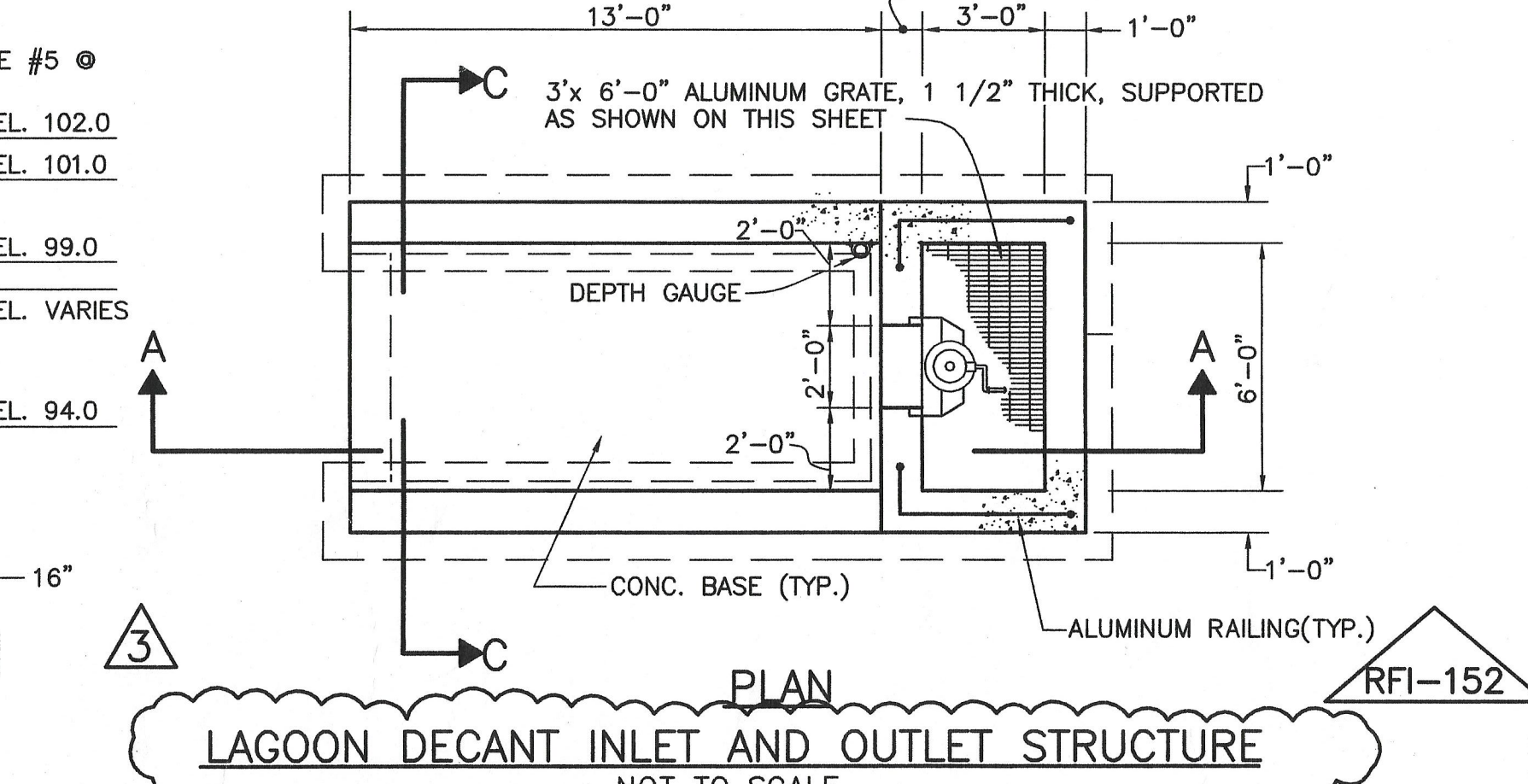
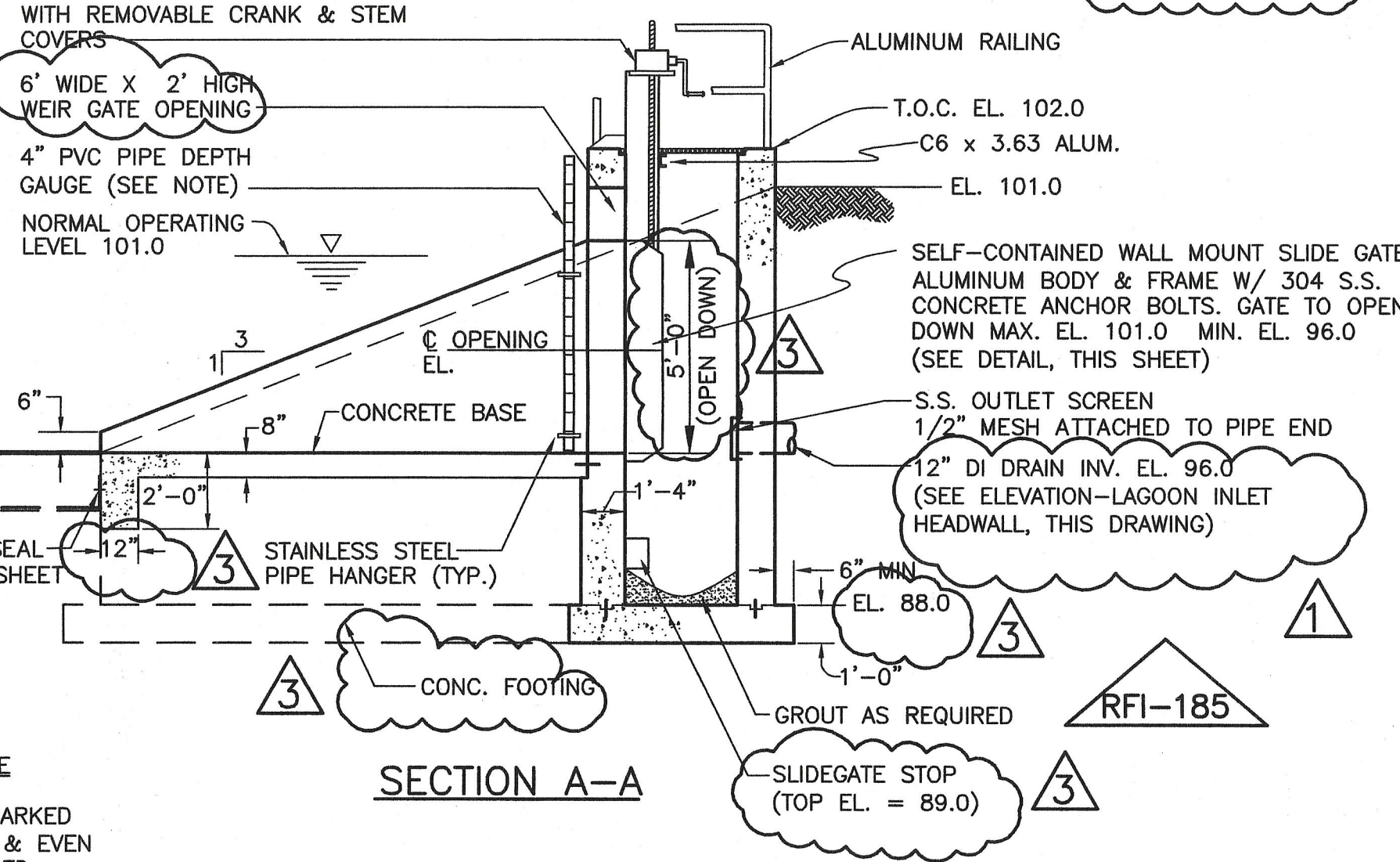
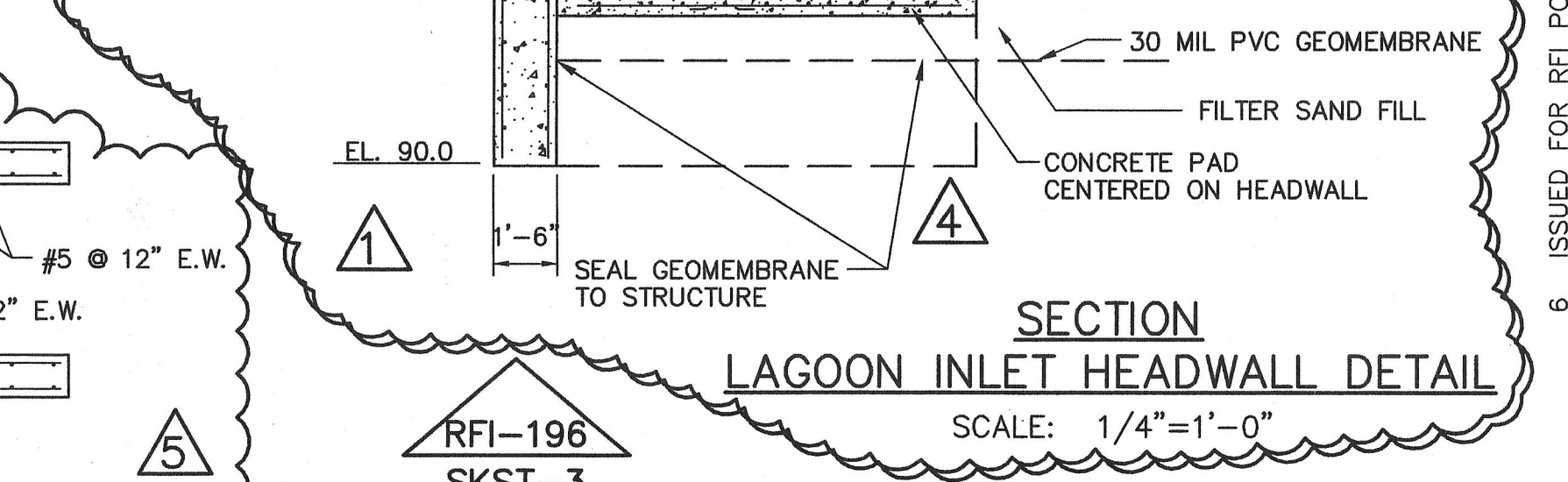
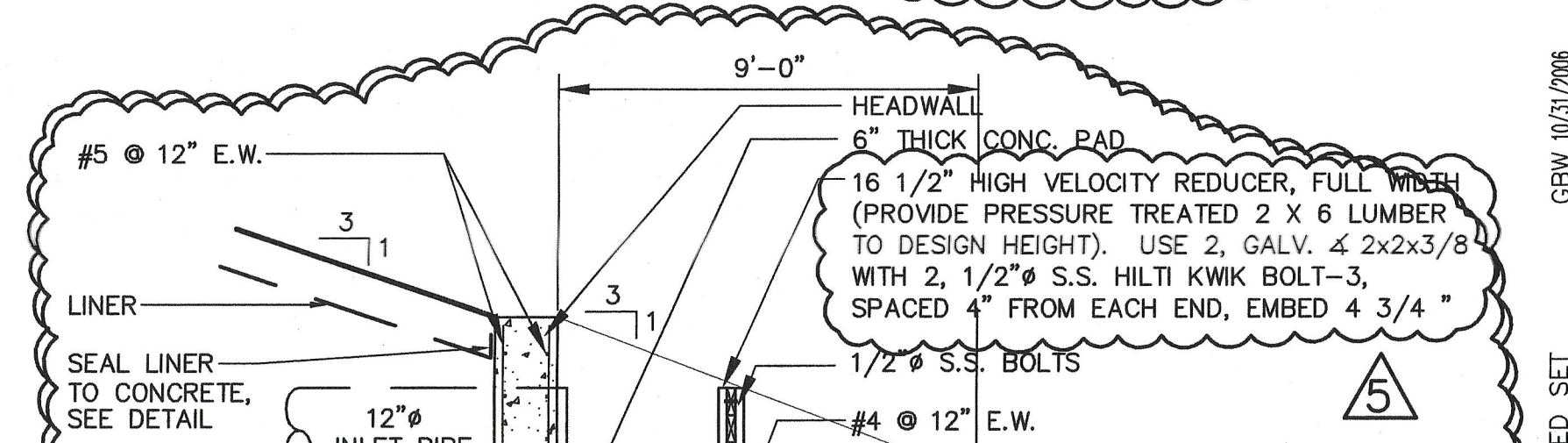
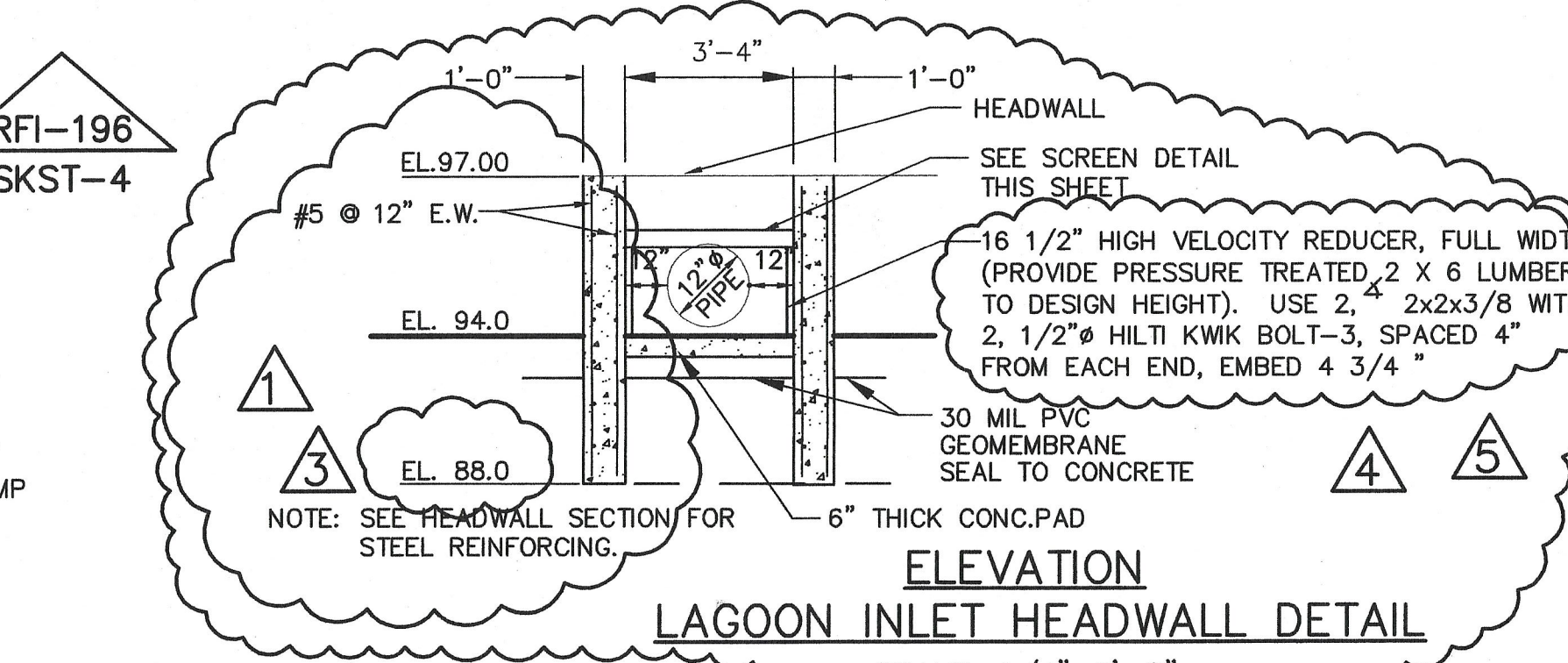
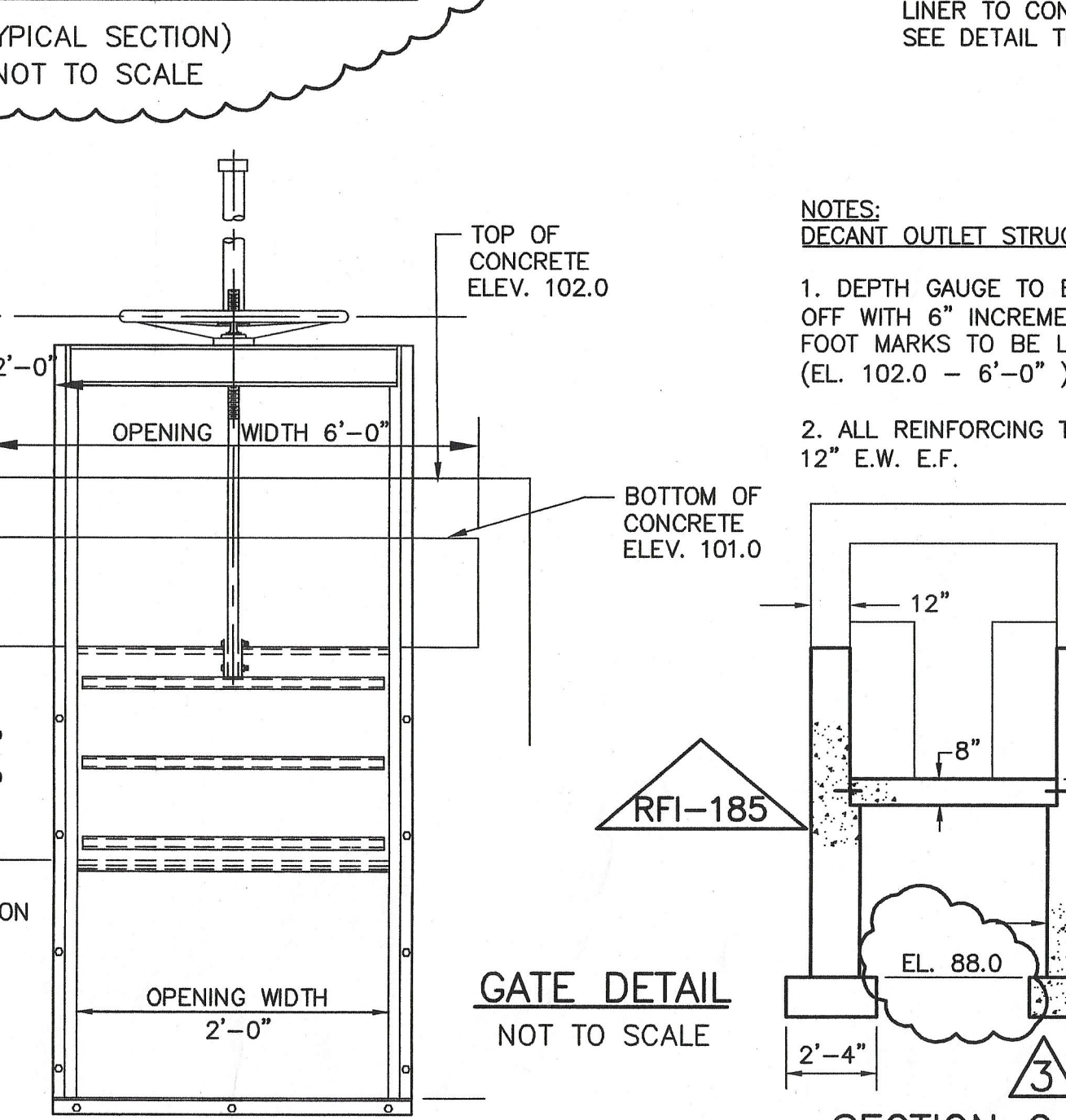
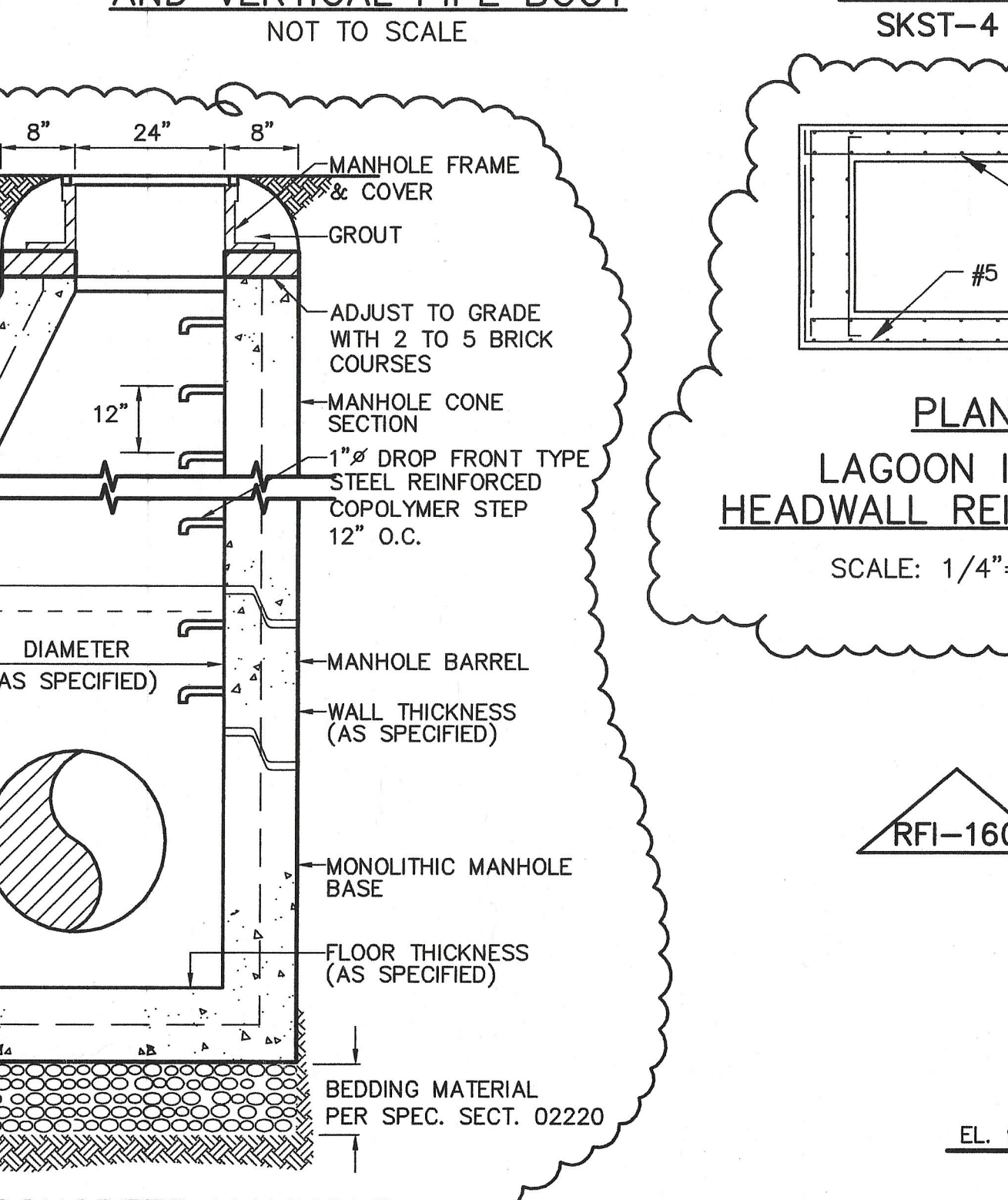
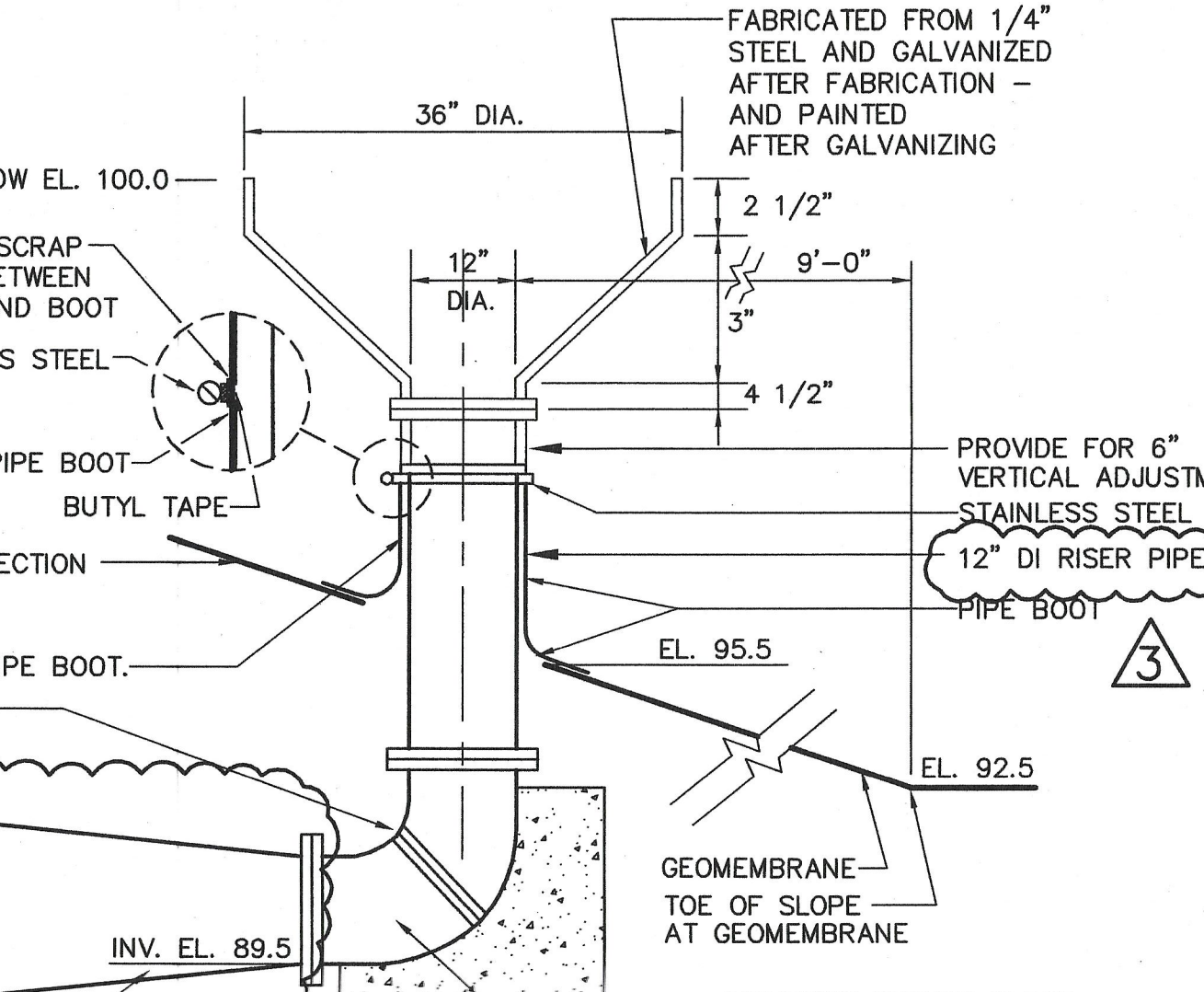
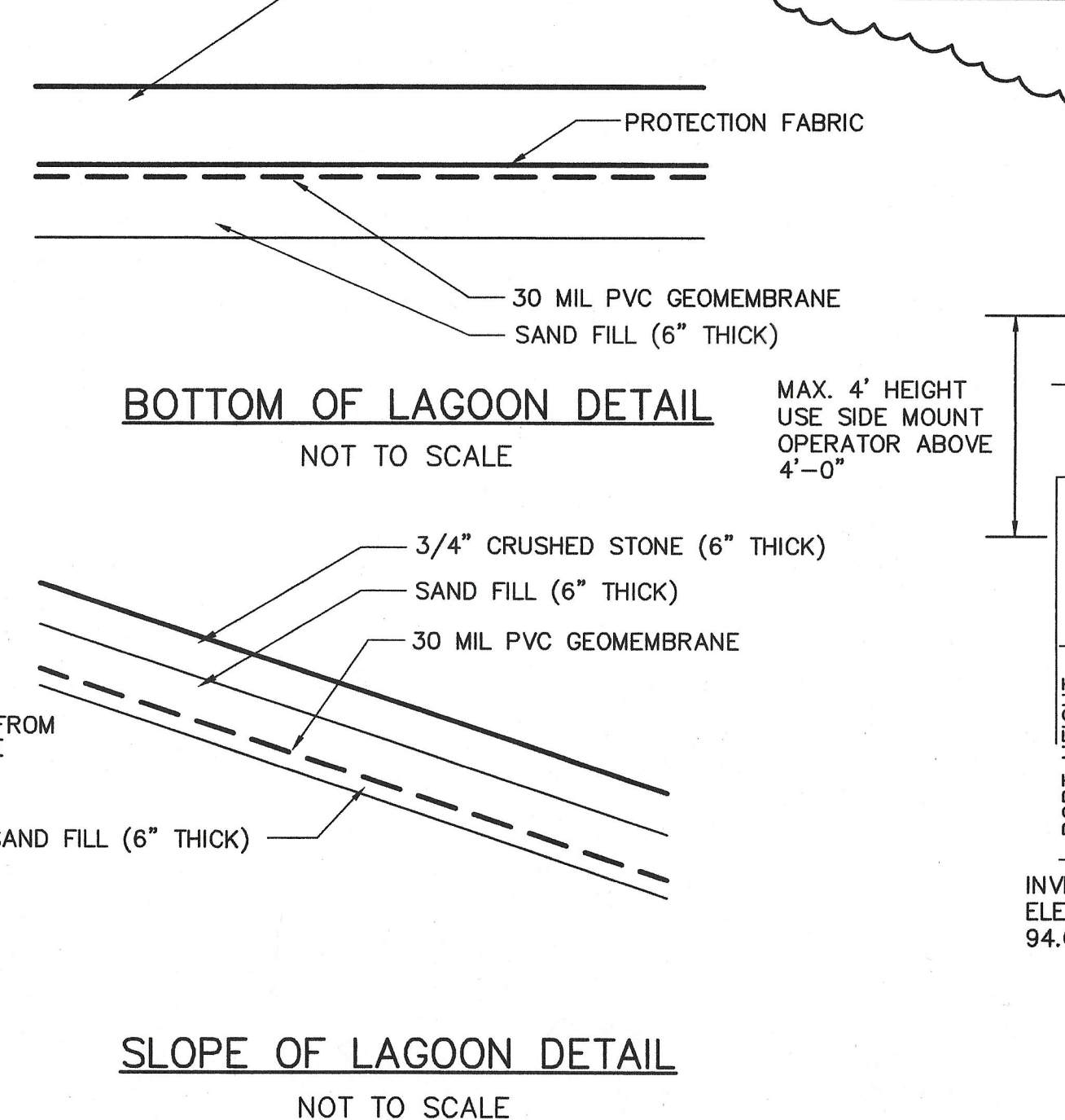
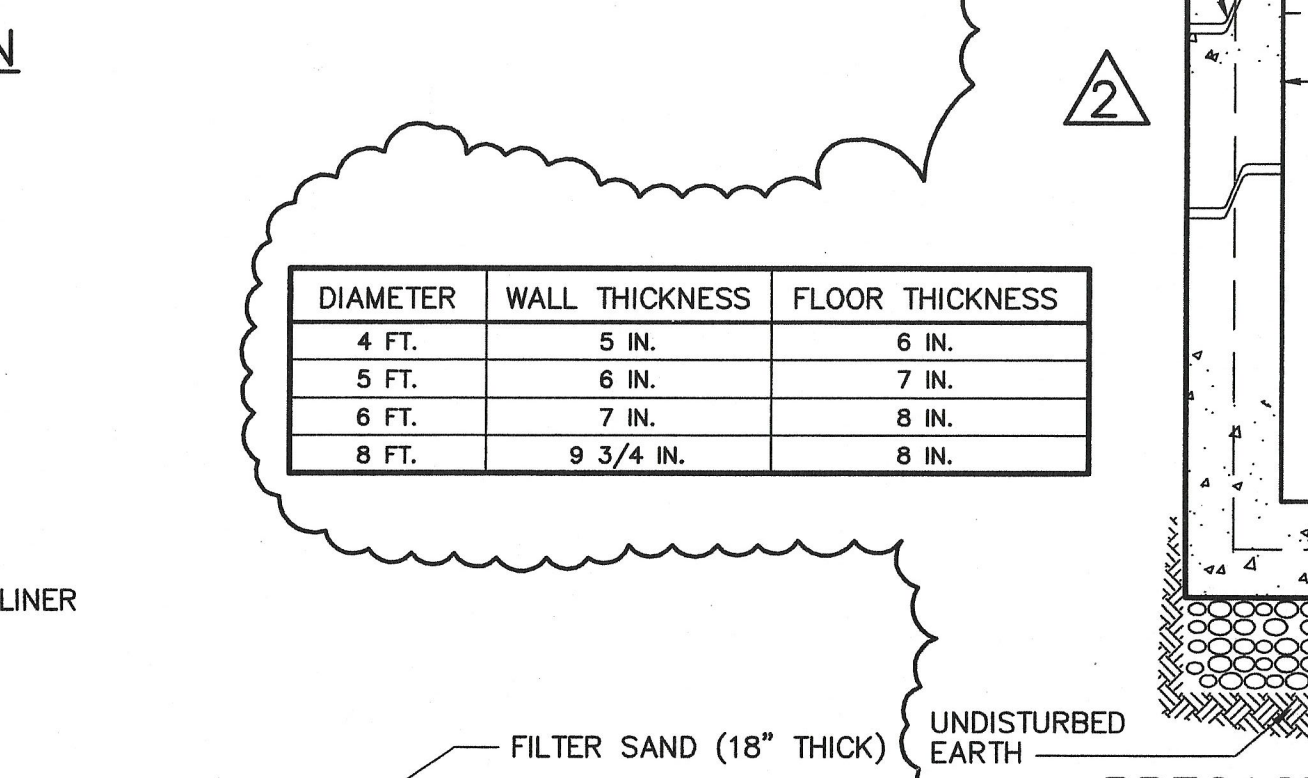
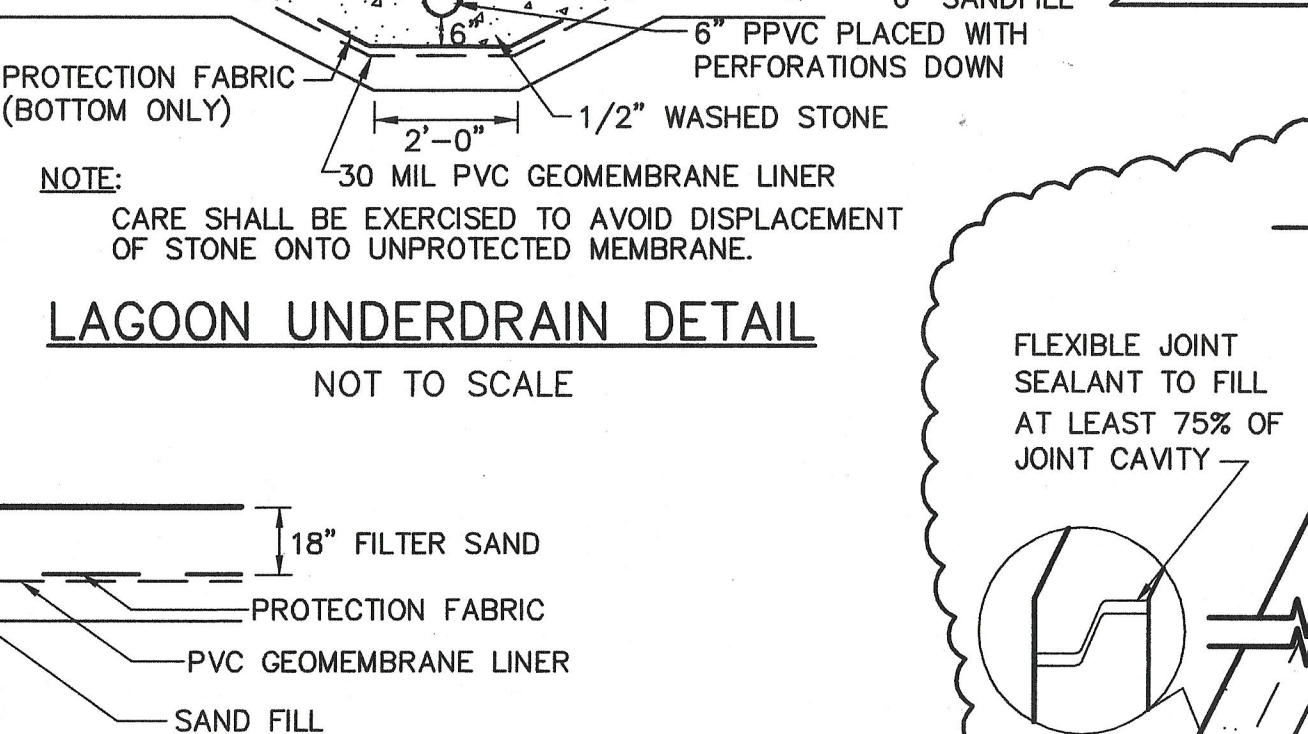
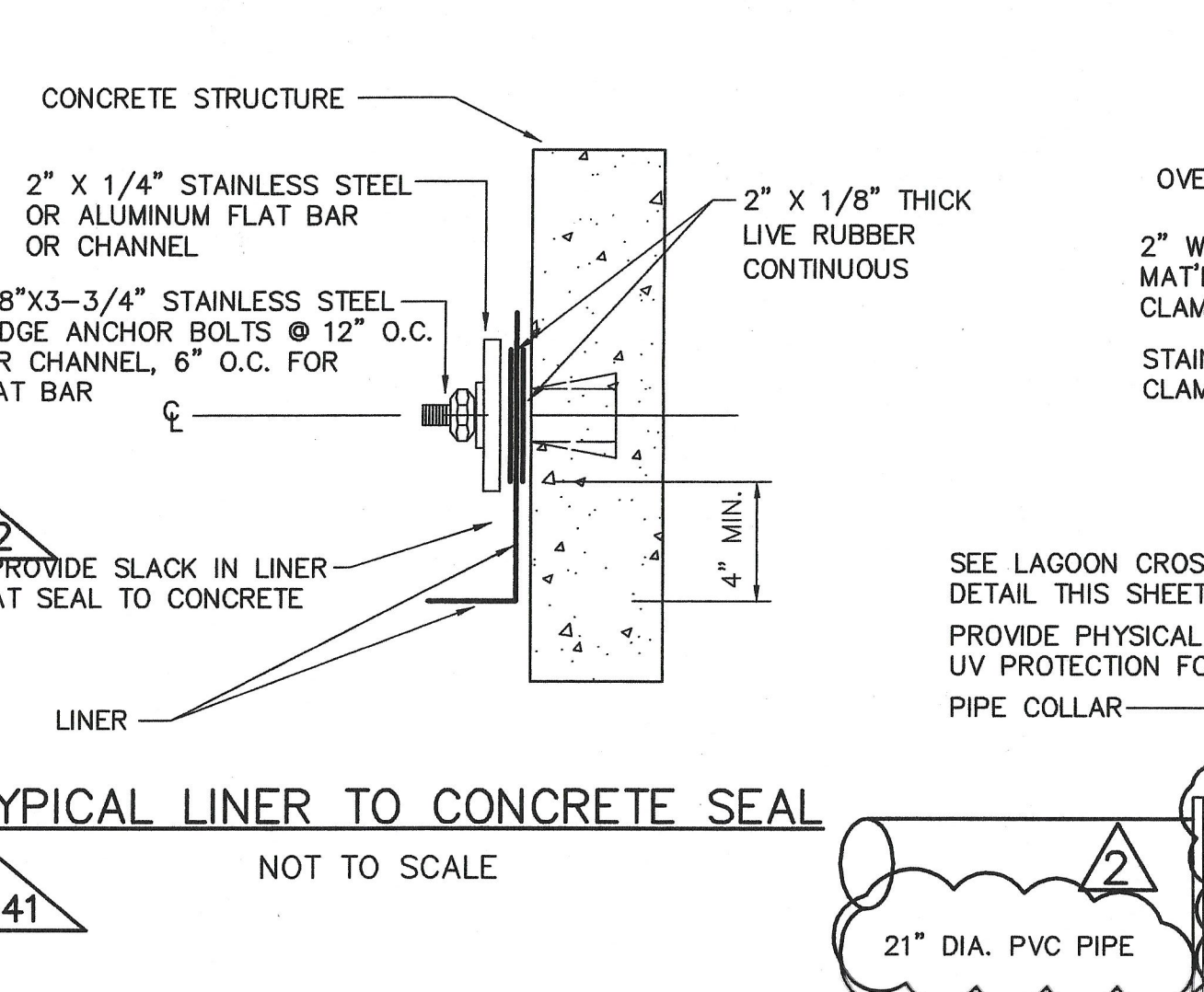
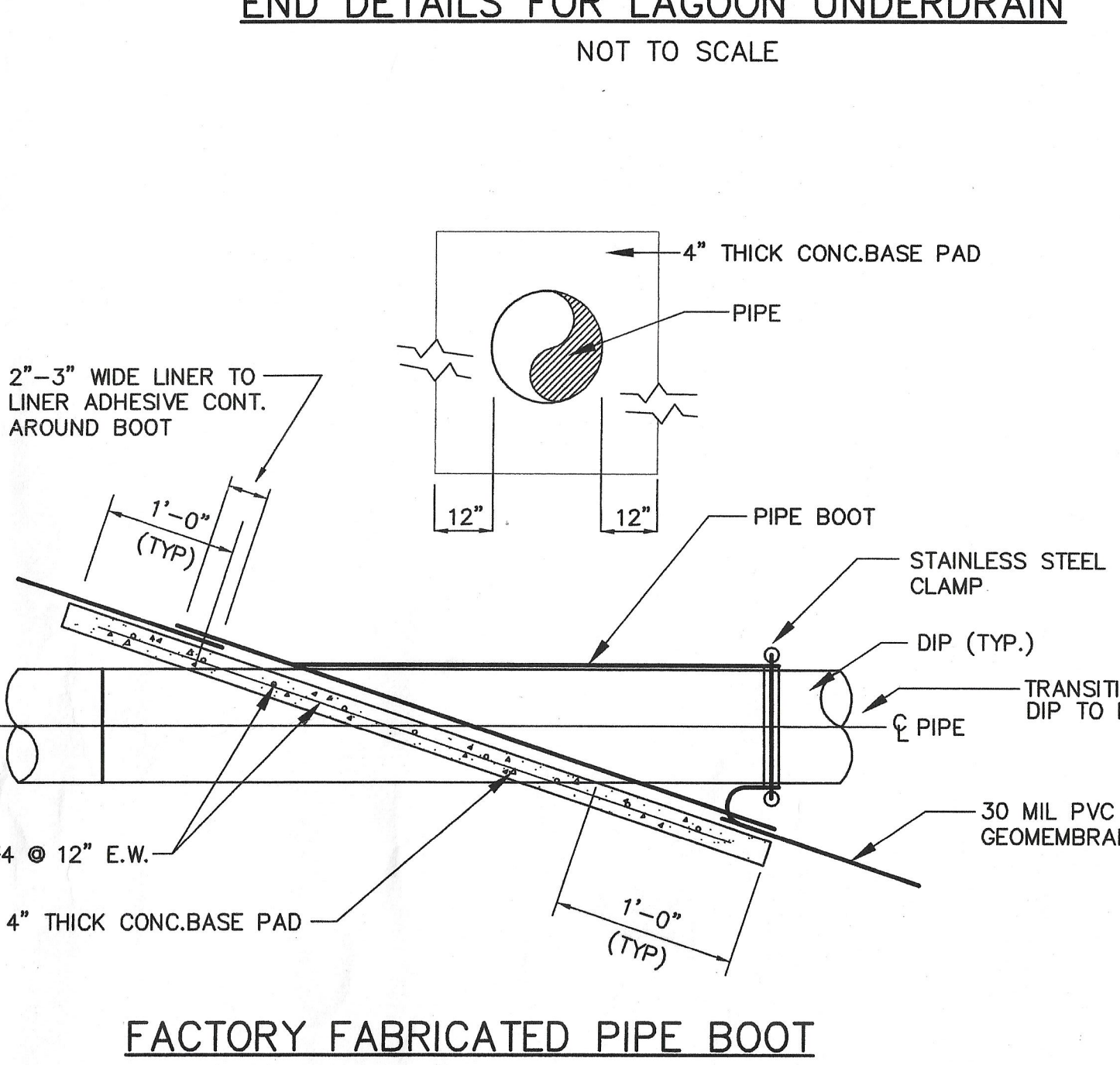
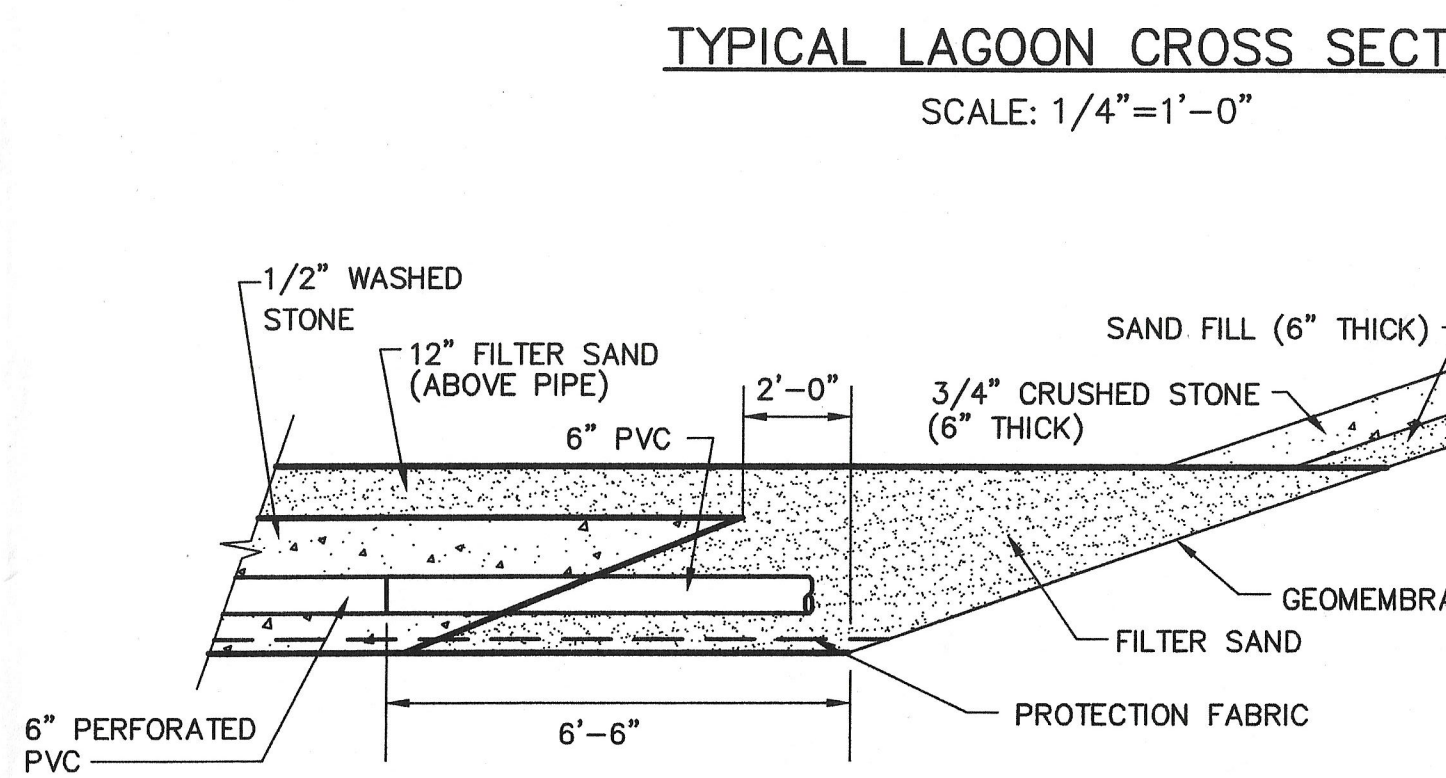
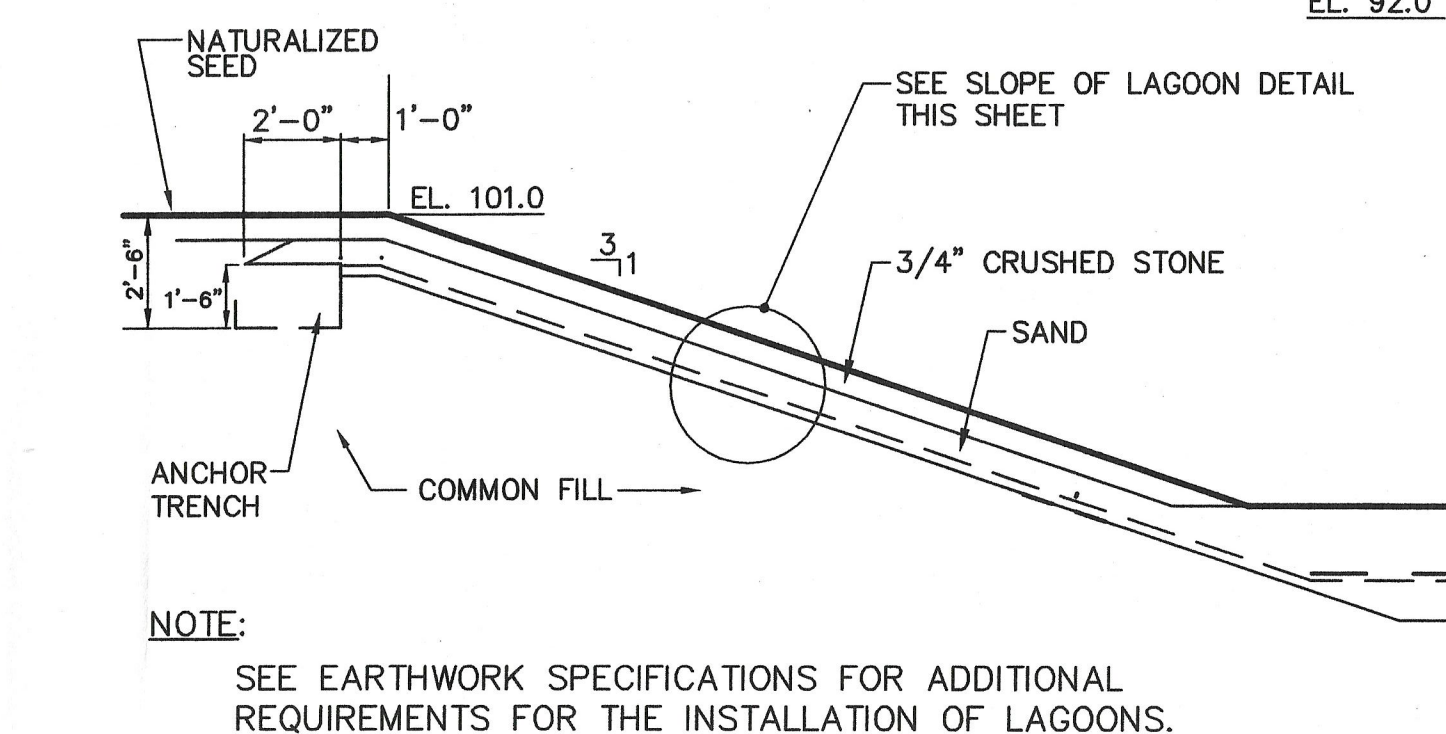
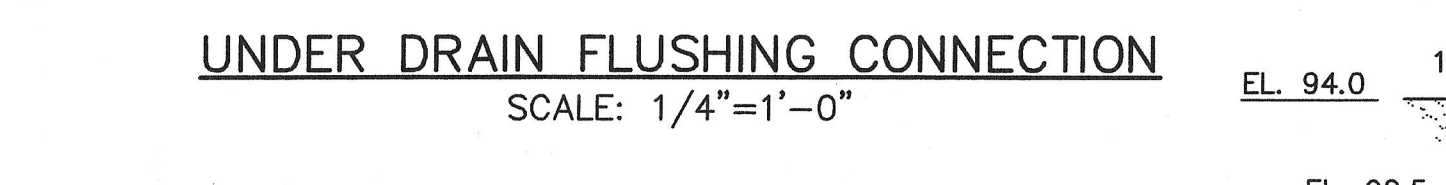
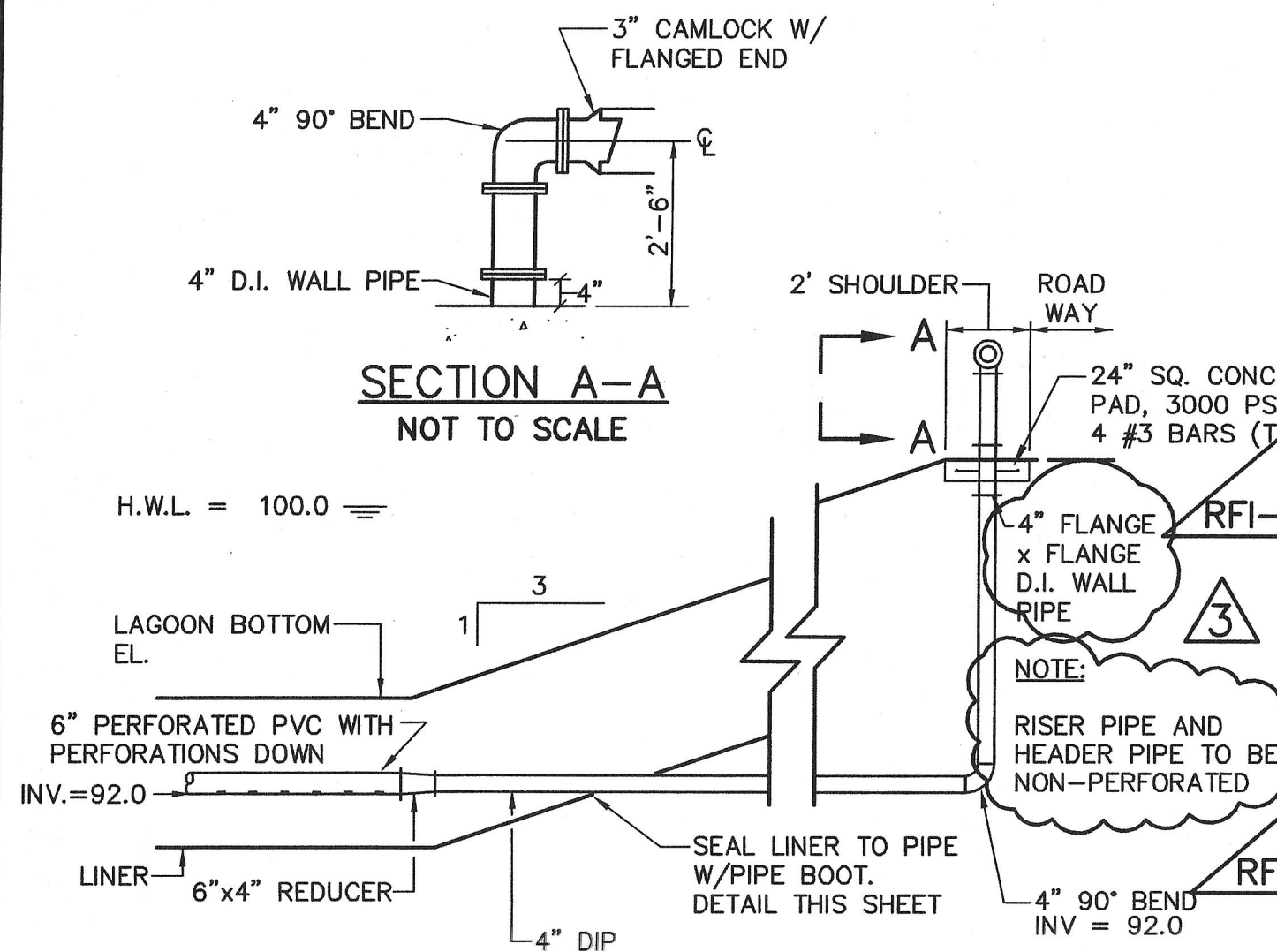
DESIGNED BY	DWG SCALE AS NOTED
DRAWN BY	CONTRACT NO.
CHECKED BY	DATE OCTOBER 31, 2006

ST-2

SHEET 6 OF

RFI POSTED SET 10/31/06

L:\work\99993\CAD\10 LRSB'S\ST-10 LRSB'S.dwg, 11/15/2006 6:13:37 PM, jay.mitch

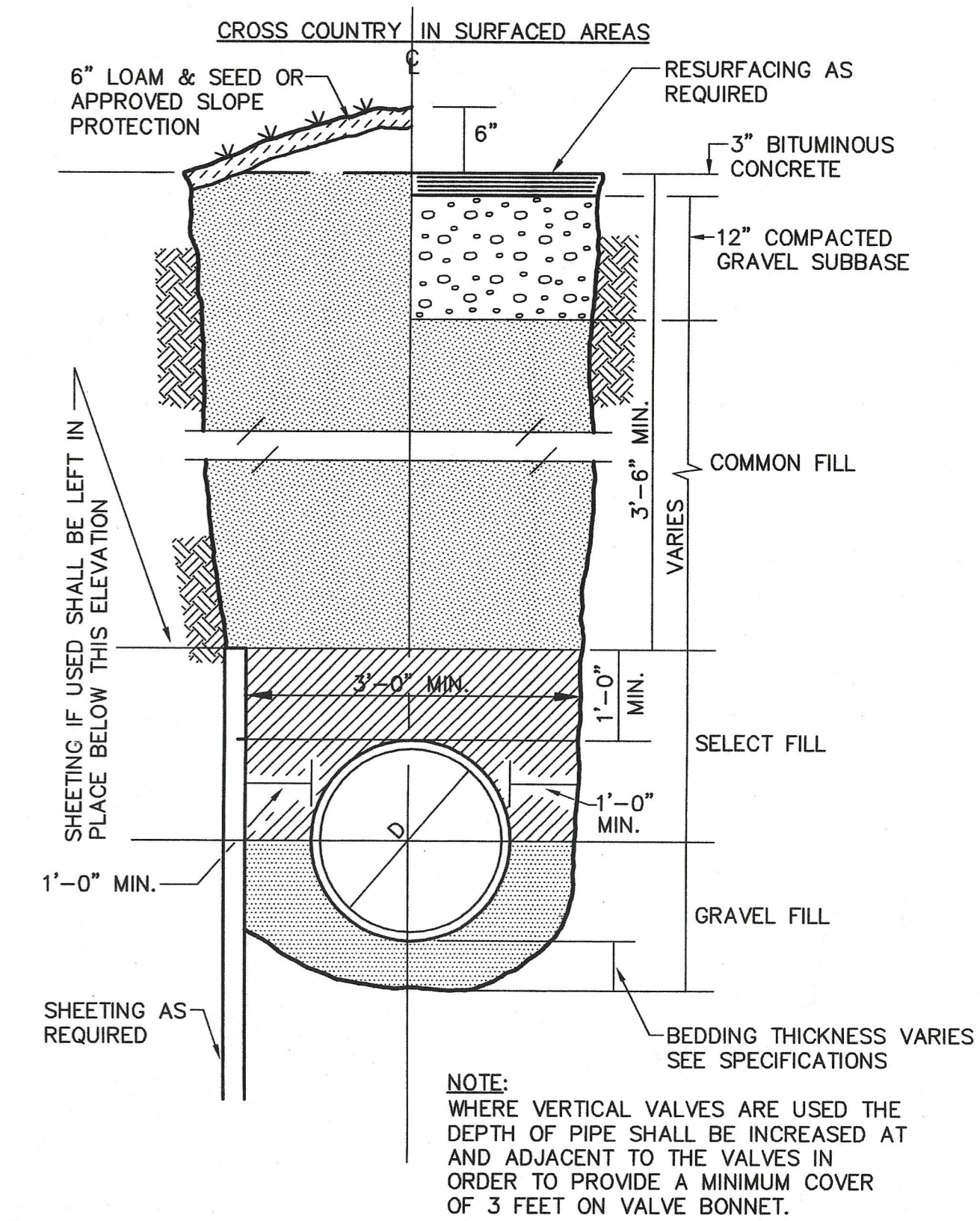
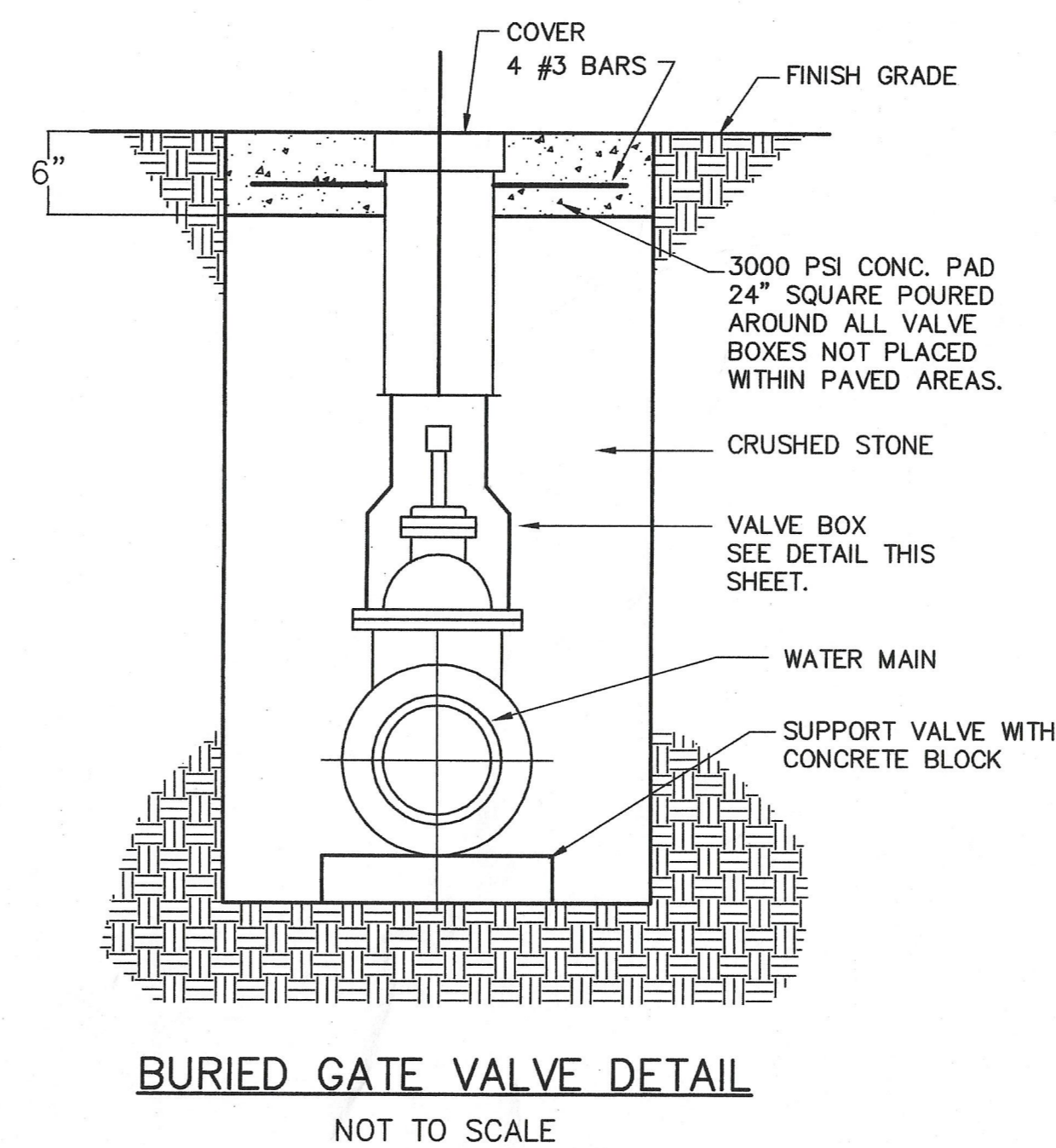
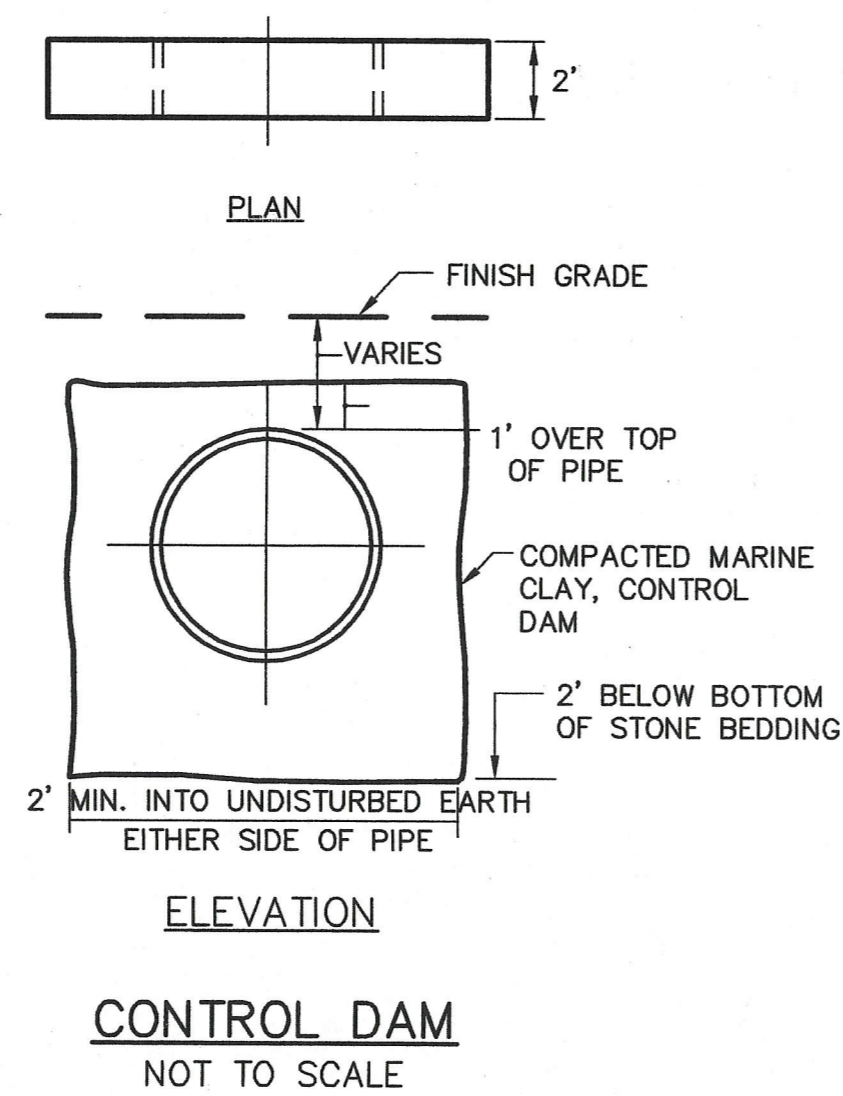
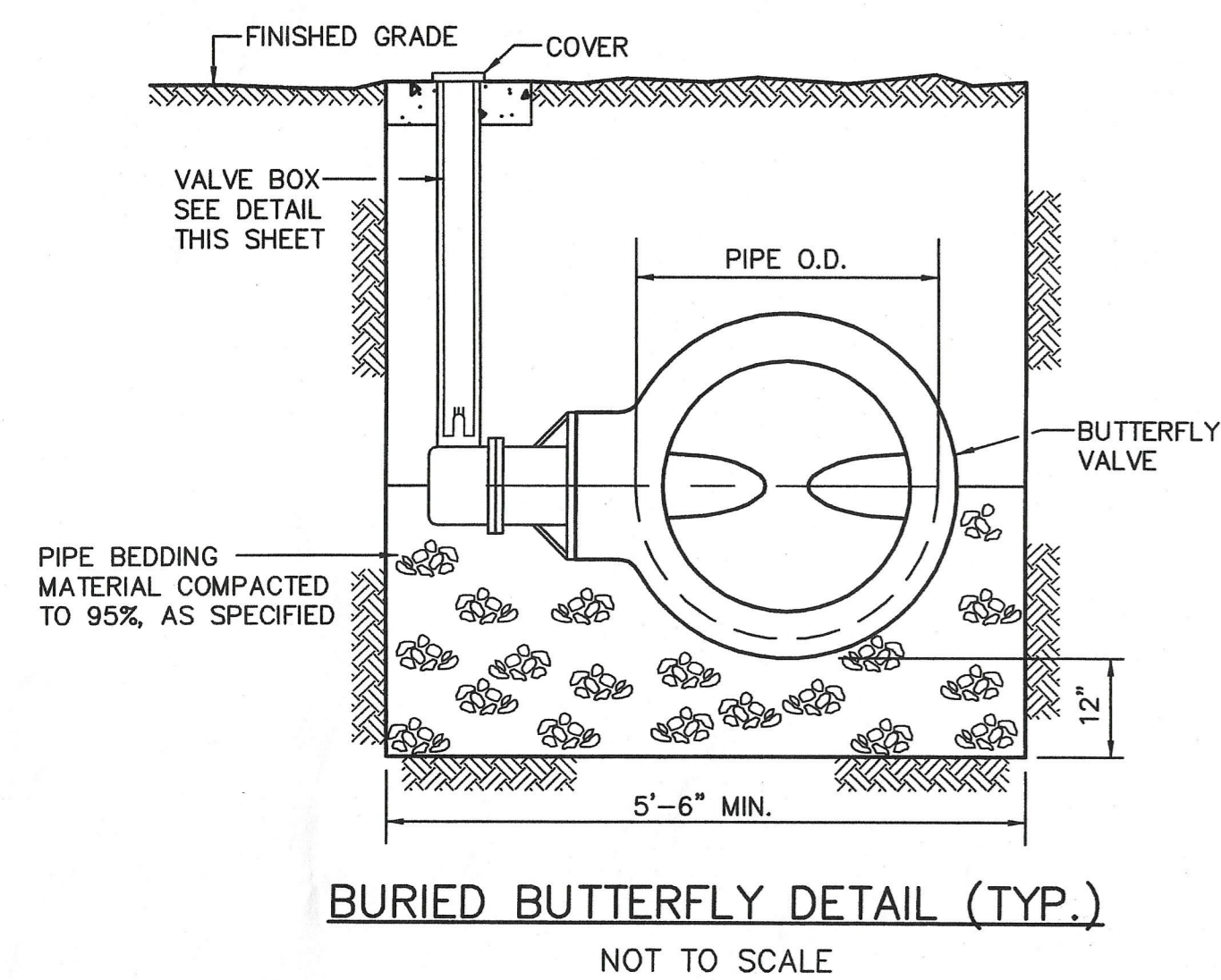
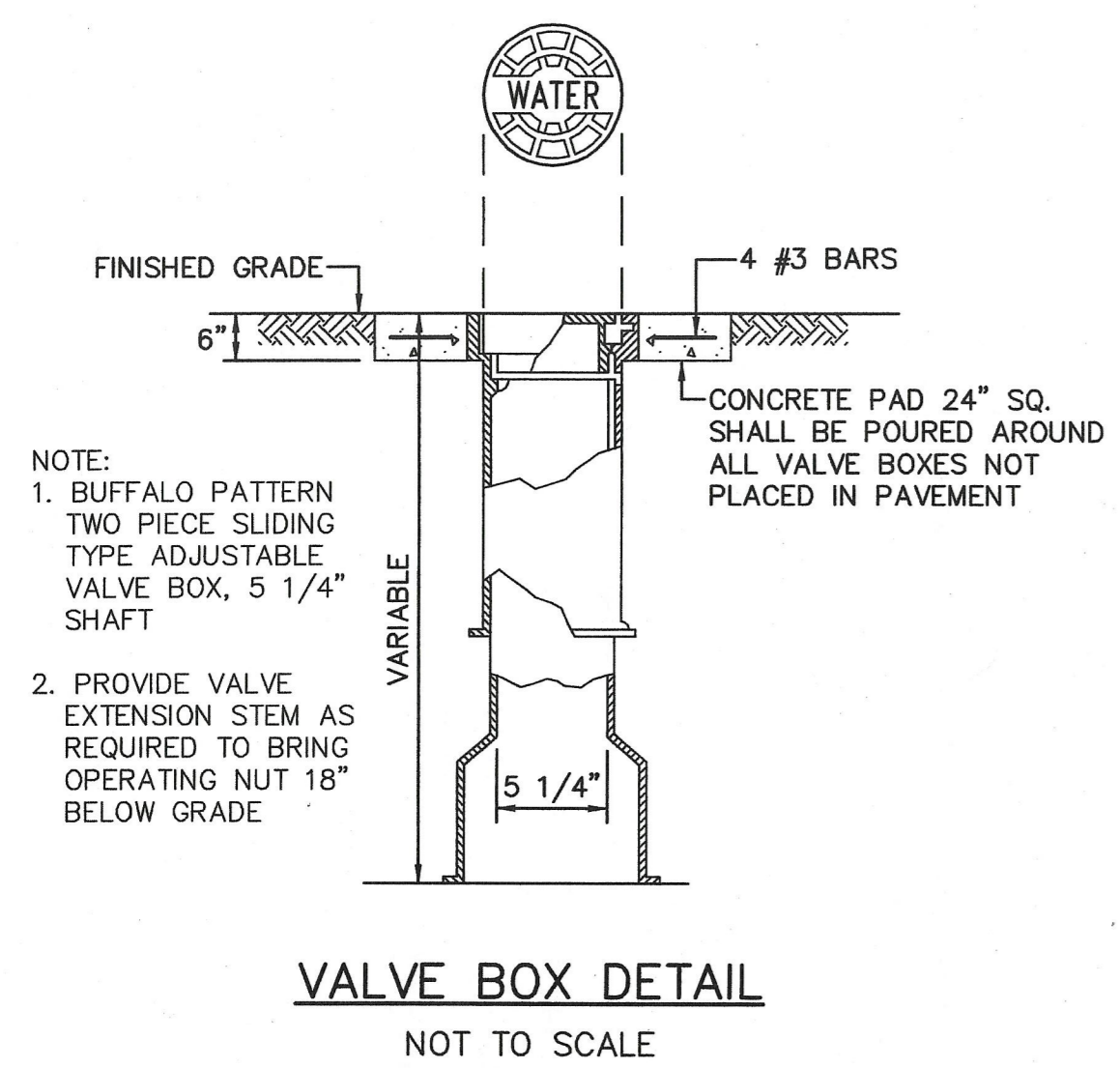
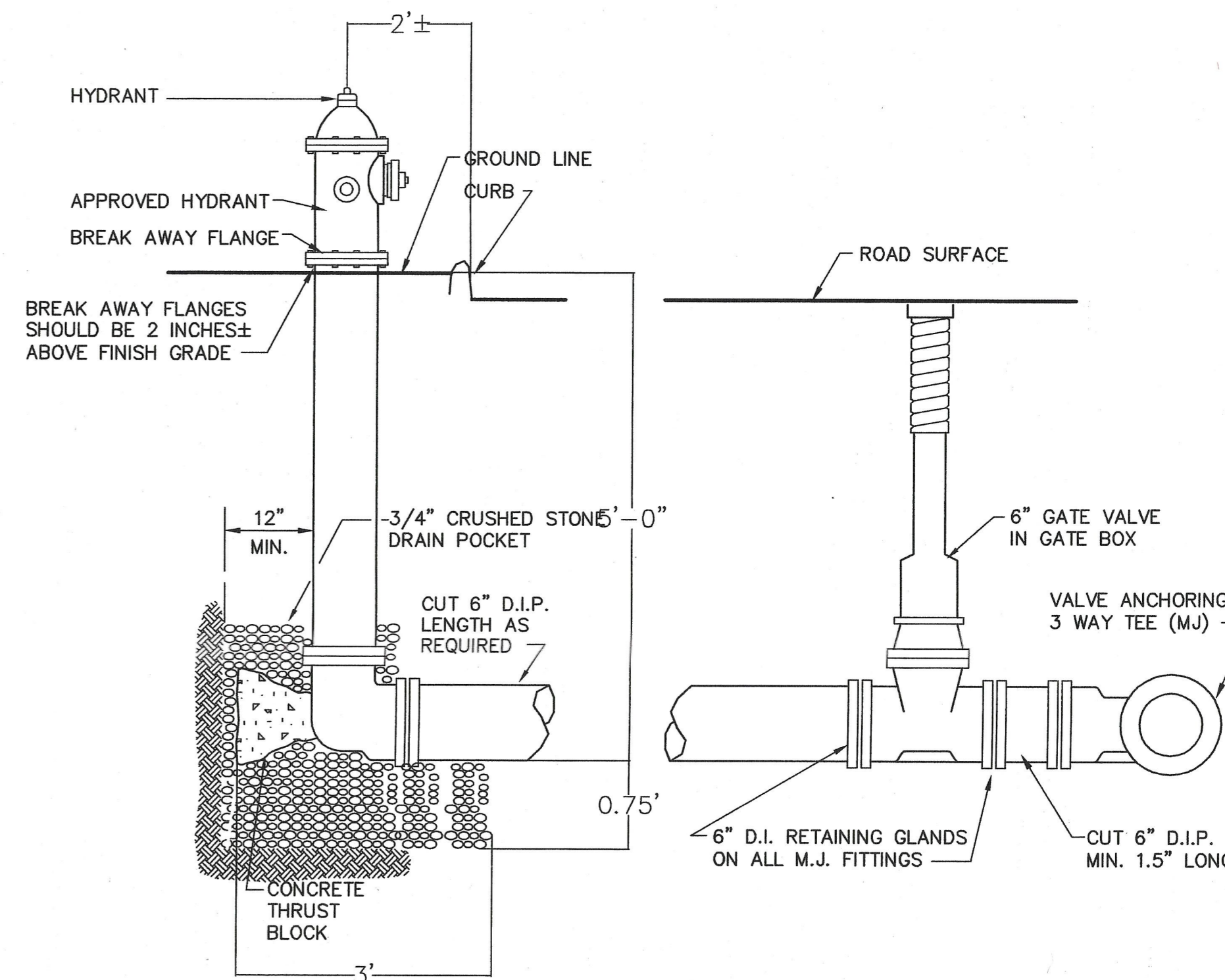
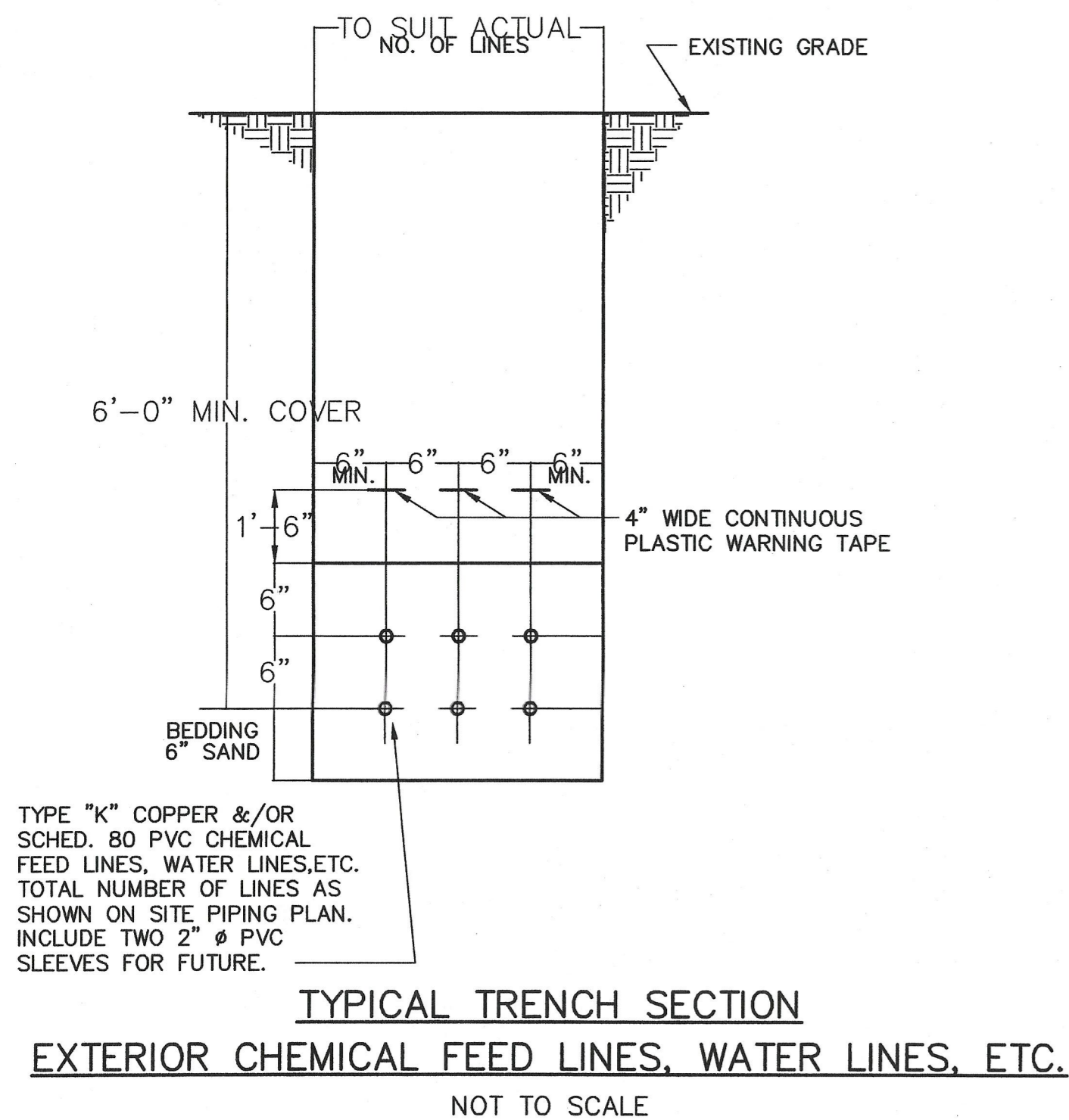


**EarthTech**  
A Tyco International Ltd. Company  
300 BAKER AVENUE, SUITE 200 CONCORD, MA 01742 (978) 371-4000

**PAWTUCKET REGIONAL WATER TREATMENT FACILITY**  
**PKG 10 - LRSB'S**  
MILL STREET LRSB'S - DETAILS AND SECTIONS

DESIGNED BY	DWG SCALE
DRAWN BY	AS NOTED
CHECKED BY	CONTRACT NO.
DATE	DATE
OCTOBER 31, 2006	

ST-3  
SHEET 7 OF



**EarthTech**  
A Tyco International Ltd. Company  
300 BAKER AVENUE SUITE 290 CONCORD MA 01742 (978) 371-4000

FULL SIZE DRAWING = 4"									
NO.	REV.	DATE	BY	REVISIONS					
0	ISSUED FOR CONSTRUCTION	09/07/2006	GEW						
1	ISSUED FOR RFI POSTED SET	10/31/2006	GEW						

**PAWTUCKET, RHODE ISLAND  
PAWTUCKET REGIONAL  
WATER TREATMENT FACILITY  
PKG 10 - LRSBS'  
MILL STREET LRSBS - SITE PIPING DETAILS**

DESIGNED BY	DWG SCALE AS NOTED
DRAWN BY	CONTRACT NO
CHECKED BY	DATE
	OCTOBER 31, 2006

**ST-4**

SHEET 8 OF